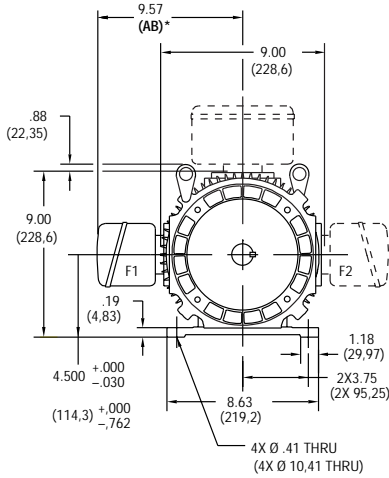


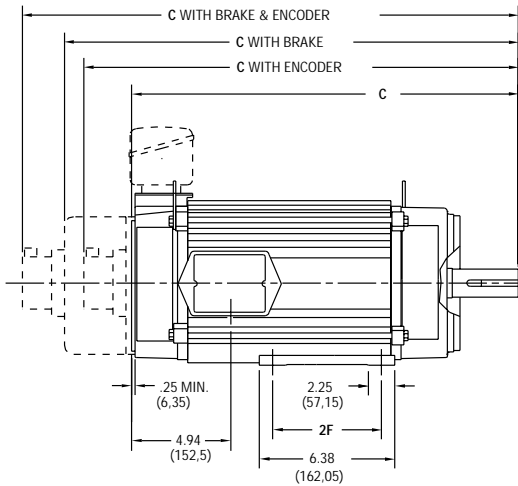
FACTORQ MOTOR DIMENSIONS

E180 Frames, TENV (Totally Enclosed, Non-Ventilated)

DRIVE END



SIDE VIEW

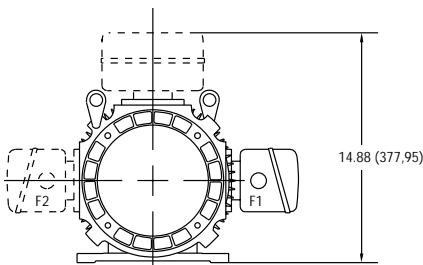


CALLOUT FOR "C" DIMENSION				
MODEL	MOTOR ONLY	WITH ENCODER	WITH BRAKE	WITH BRAKE & ENCODER
E182	16.63 (422,4)	19.42 (493,3)	20.52 (521,2)	22.48 (571)
E183	20.44 (519,2)	22.23 (590)	24.33 (618)	26.29 (667,8)
E184	20.44 (519,2)	23.23 (590)	24.33 (618)	26.29 (667,8)

MODEL	2F DIMENSION
E182	4.50 (114,3)
E183	5.50 (139,7)
E184	5.50 (139,7)

Dimensions in () are mm, all others in inches

OPPOSITE DRIVE END



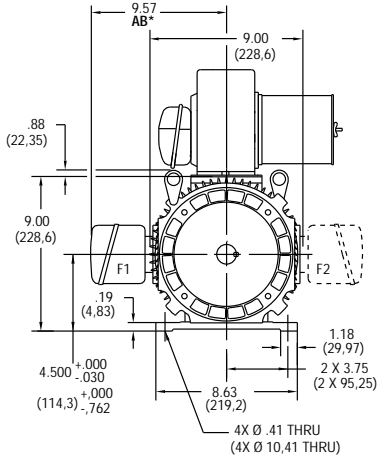
- NOTE:
- Reference page 124 for conduit box dimensions.
 - Conduit box can be rotated in 90° steps on its own axis and can be mounted on opposite side or top when specified.

* See terminations, page 126.

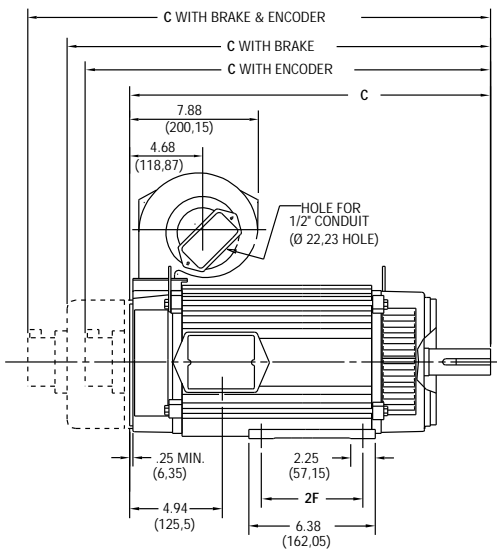
FACTORQ MOTOR DIMENSIONS

E180 Frames, DPBV (Dripproof, Blower Ventilated)

DRIVE END



SIDE VIEW

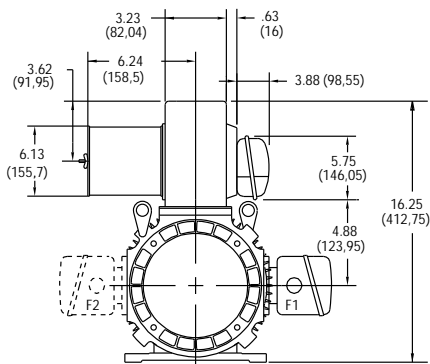


CALLOUT FOR "C" DIMENSION				
MODEL	MOTOR ONLY	WITH ENCODER	WITH BRAKE	WITH BRAKE & ENCODER
E182	$\frac{16.63}{(422,4)}$	$\frac{19.42}{(493,3)}$	$\frac{20.52}{(521,2)}$	$\frac{22.48}{(571)}$
E183	$\frac{20.44}{(519,2)}$	$\frac{22.23}{(590)}$	$\frac{24.33}{(618)}$	$\frac{26.29}{(667,8)}$
E184	$\frac{20.44}{(519,2)}$	$\frac{23.23}{(590)}$	$\frac{24.33}{(618)}$	$\frac{26.29}{(667,8)}$

MODEL	2F DIMENSION
E182	$\frac{4.50}{(114,3)}$
E183	$\frac{5.50}{(139,7)}$
E184	$\frac{5.50}{(139,7)}$

Dimensions in () are mm, all others in inches

OPPOSITE DRIVE END



NOTE:

- Reference page 124 for conduit box dimensions.
- Conduit box can be rotated in 90° steps on its own axis and can be mounted on opposite side or top when specified.
- Blower can be rotated 180° about its axis. Size #2 blower is used on E180 frames. See Page 133.

* See terminations, page 126.

A

MOTORS

B

DRIVES

C

PRE-ENGINEERED
DRIVE SYSTEMS

D

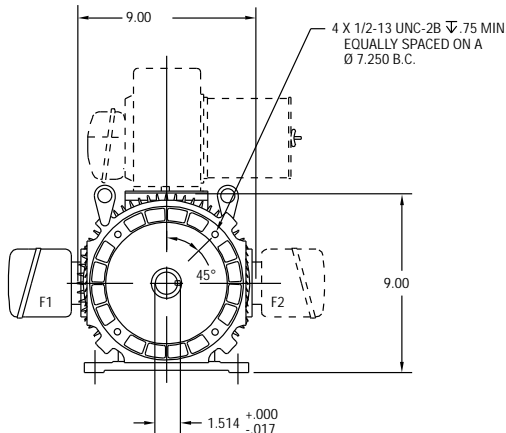
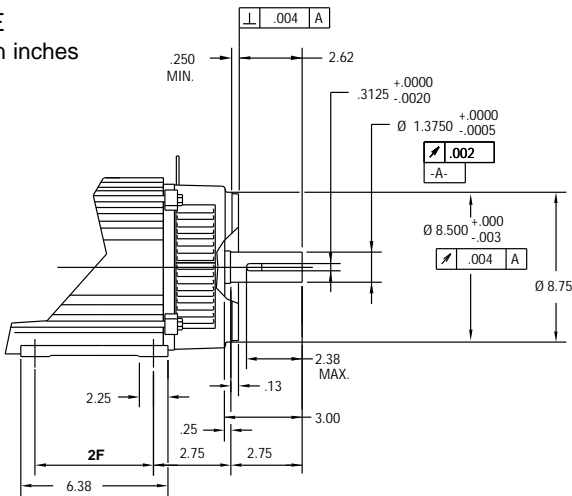
GENERAL
INFORMATION

FACTORQ MOTOR DIMENSIONS

E180 Frame Mounting, NEMA and Metric

NEMA C FACE

Dimensions in inches



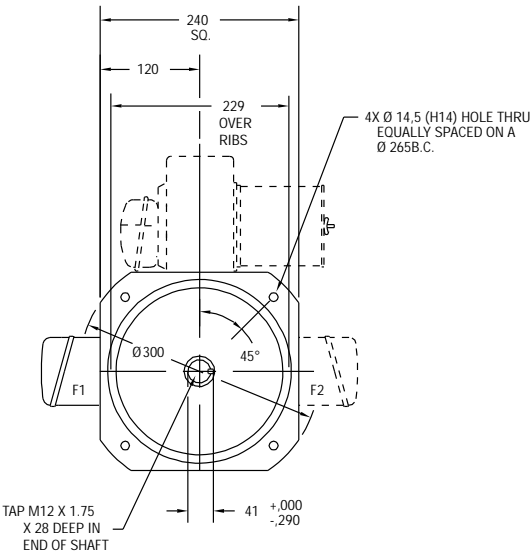
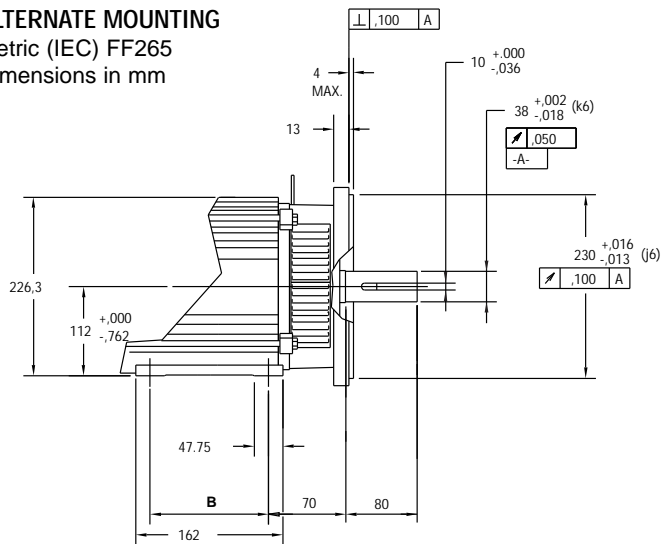
REFER TO DPBV DIMENSIONS ON PAGE 61 FOR FRONT VIEW FEET DIMENSIONS.

MODEL	2F DIMENSION
E182	4.50
E183	5.50
E184	5.50

ALTERNATE MOUNTING

Metric (IEC) FF265

Dimensions in mm



EXCEPT FOR FOOT HEIGHT REFER TO DPBV DIMENSIONS ON PAGE 61 FOR FRONT VIEW FEET DIMENSIONS.

MODEL	B DIMENSION
E182	114,3
E183	139,7
E184	139,7