

FACTORQ MOTOR DIMENSIONS

A

MOTORS

B

DRIVES

C

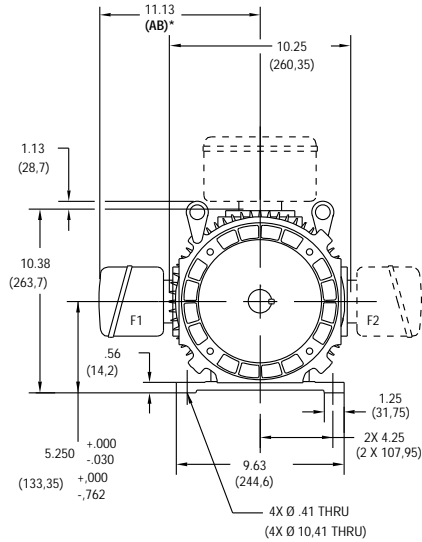
PRE-ENGINEERED
DRIVE SYSTEMS

D

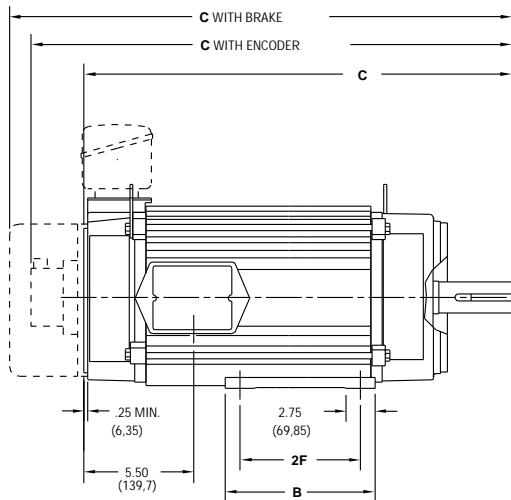
GENERAL
INFORMATION

E210 Frames, TENV (Totally Enclosed, Non-Ventilated)

DRIVE END



SIDE VIEW

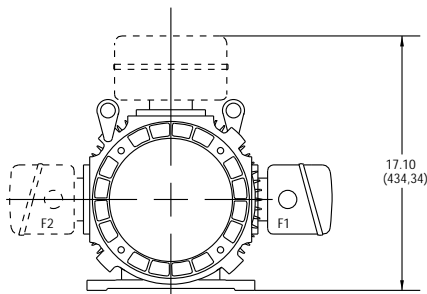


CALLOUT FOR "C" DIMENSION				
MODEL	MOTOR ONLY	WITH ENCODER	WITH BRAKE	WITH BRAKE & ENCODER
E213	22.25 (565,15)	25.04 (636)	26.14 (664)	28.10 (713,7)
E215	26.88 (682,75)	29.67 (753,6)	30.77 (781,6)	32.73 (831,3)
E218	29.25 (742,95)	32.04 (813,8)	33.14 (841,8)	35.10 (891,5)

MODEL	2F DIMENSION	B DIMENSION
E213	5.50 (139,7)	8.38 (212,85)
E215	7.00 (177,8)	8.38 (212,85)
E218	10.00 (254)	11.38 (289,1)

Dimensions in () are mm, all others in inches

OPPOSITE DRIVE END



NOTE:

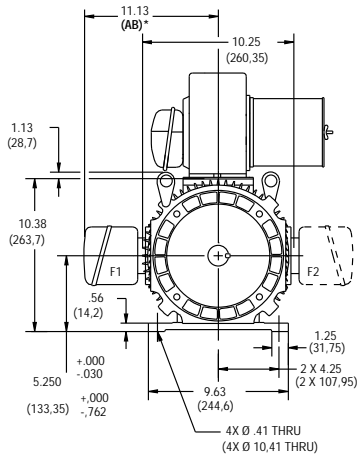
- Reference page 124 for conduit box dimensions.
- Conduit box can be rotated in 90° steps on its own axis and can be mounted on opposite side or top when specified.

* See terminations, page 126.

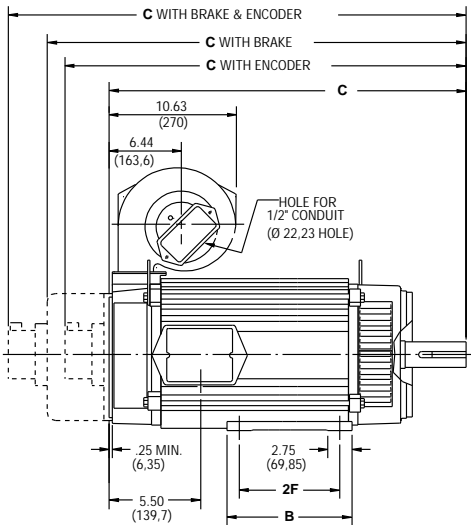
FACTORQ MOTOR DIMENSIONS

E210 Frames, DPBV (Dripproof, Blower Ventilated)

DRIVE END



SIDE VIEW

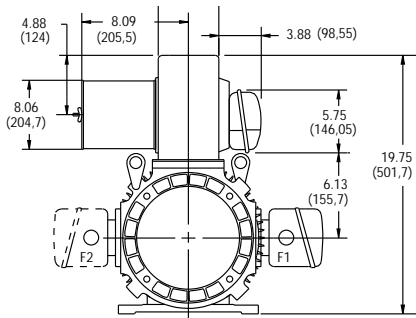


CALLOUT FOR "C" DIMENSION				
MODEL	MOTOR ONLY	WITH ENCODER	WITH BRAKE	WITH BRAKE & ENCODER
E213	22.25 (565,15)	25.04 (636)	26.14 (664)	28.10 (713,7)
E215	26.88 (682,75)	29.67 (753,6)	30.77 (781,6)	32.73 (831,3)
E218	29.25 (742,95)	32.04 (813,8)	33.14 (841,8)	35.10 (891,5)

MODEL	2F DIMENSION	B DIMENSION
E213	5.50 (139,7)	8.38 (212,85)
E215	7.00 (177,8)	8.38 (212,85)
E218	10.00 (254)	11.38 (289,1)

Dimensions in () are mm, all others in inches

OPPOSITE DRIVE END



NOTE:

1. Reference page 124 for conduit box dimensions.
2. Conduit box can be rotated in 90° steps on its own axis and can be mounted on opposite side or top when specified.
3. Blower can be rotated 180° about its axis. Size #3 blower is used on E210 frames. See Page 133.

* See terminations, page 126.

FACTORQ MOTOR DIMENSIONS

A
MOTORS

B
DRIVES

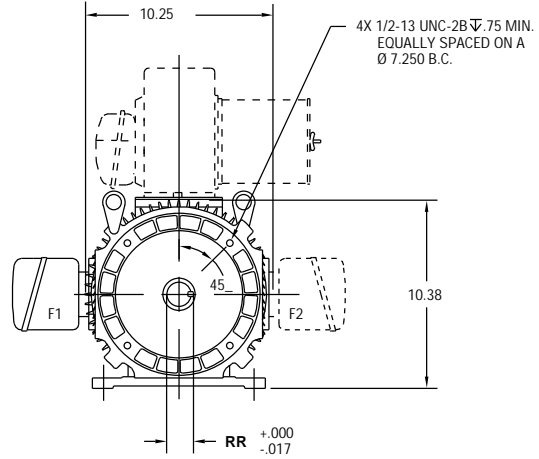
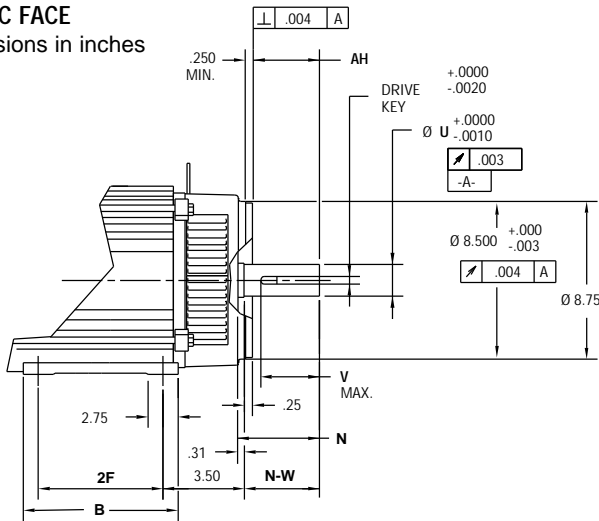
C
PRE-ENGINEERED
DRIVE SYSTEMS

D
GENERAL
INFORMATION

E210 Frame Mounting, NEMA and Metric

NEMA C FACE

Dimensions in inches

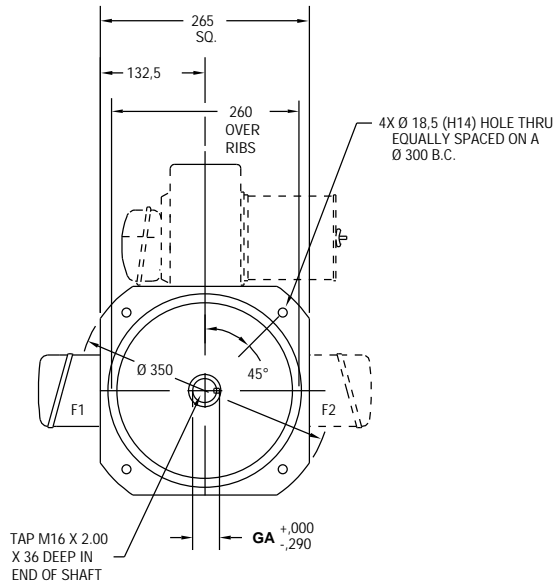
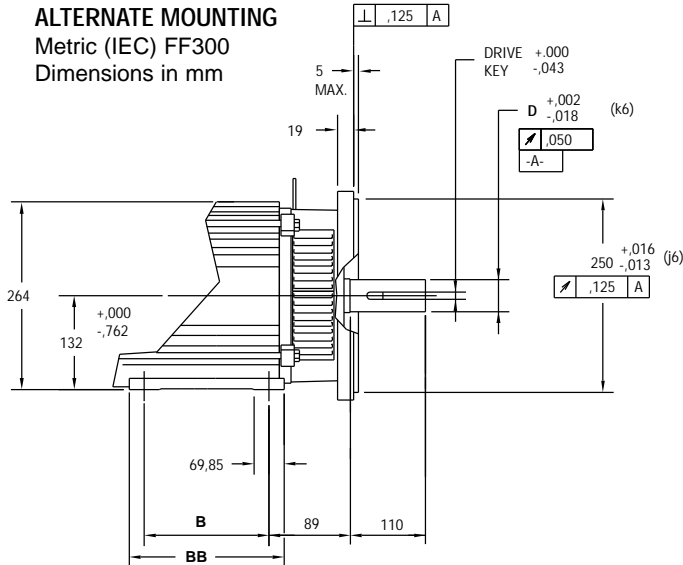


REFER TO DPBV DIMENSIONS ON PAGE 64 FOR FRONT VIEW FEET DIMENSIONS.

MODEL	2F	B	AH	N	N-W	U	V	RR	Drive Key
E213	5.50	8.38	3.75	4.31	4.00	1.625	3.5	1.791	.375
E215	7.00	8.38	5.00	5.56	5.25	2.125	4.75	2.345	.500
E218	10.00	11.38	5.00	5.56	5.25	2.125	4.75	2.345	.500

ALTERNATE MOUNTING

Metric (IEC) FF300
Dimensions in mm



EXCEPT FOR FOOT HEIGHT REFER TO DPBV DIMENSIONS ON PAGE 64 FOR FRONT VIEW FEET DIMENSIONS.

MODEL	D	B	BB	GA	Drive Key
E213	42	139,7	213	45	12
E215	48	177,8	213	51,5	14
E218	48	254	289	51,5	14