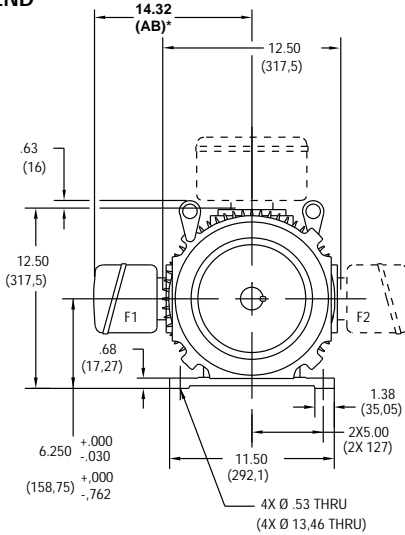


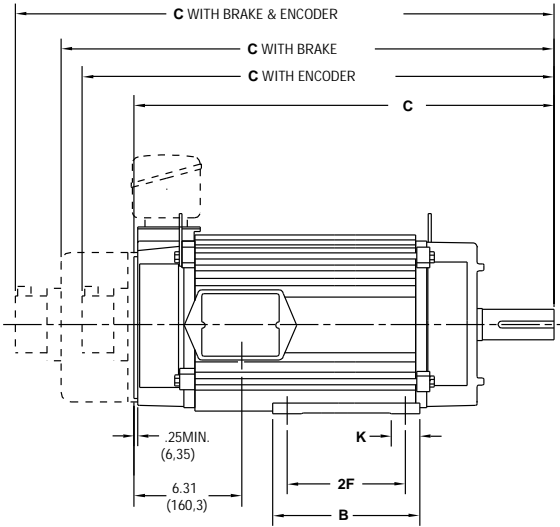
# FACTORQ MOTOR DIMENSIONS

## E250 Frames, TENV (Totally Enclosed, Non-Ventilated)

### DRIVE END



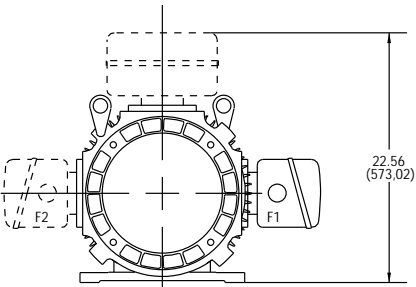
### SIDE VIEW



CALLOUT FOR "C" DIMENSION				
MODEL	MOTOR ONLY	WITH ENCODER	WITH BRAKE	WITH BRAKE & ENCODER
F254	26.94 (684,28)	29.73 (755,1)	31.88 (809,8)	33.85 (859,8)
F256	31.44 (798,58)	34.23 (869,4)	36.38 (924,1)	38.35 (974,1)
E258	33.81 (858,77)	36.60 (929,6)	38.76 (984,5)	40.72 (1034,3)
F259	36.81 (934,97)	39.60 (1005,8)	41.76 (1060,7)	43.72 (1110,5)

MODEL	2F DIMENSION	B	K
E254	8.25 (209,55)	12.00 (304,8)	3.38 (85,85)
E256	10.00 (254)	12.00 (304,8)	3.38 (85,85)
E258	14.00 (355,6)	16.00 (406,4)	2.00 (50,8)
E259	14.00 (355,6)	16.00 (406,4)	2.00 (50,8)

### OPPOSITE DRIVE END



Dimensions in ( ) are mm, all others in inches

NOTE:

- Reference page 124 for conduit box dimensions.
- Conduit box can be rotated in 90° steps on its own axis and can be mounted on opposite side or top when specified.

\* See terminations, page 126.

# FACTORQ MOTOR DIMENSIONS

A

MOTORS

B

DRIVES

C

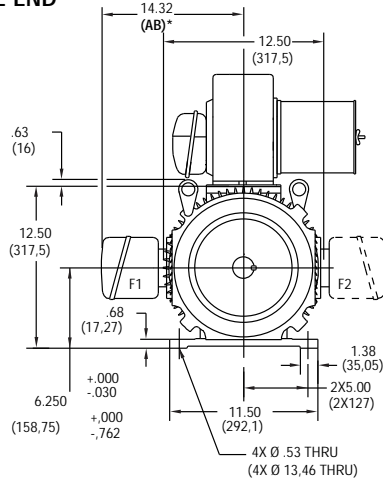
PRE-ENGINEERED  
DRIVE SYSTEMS

D

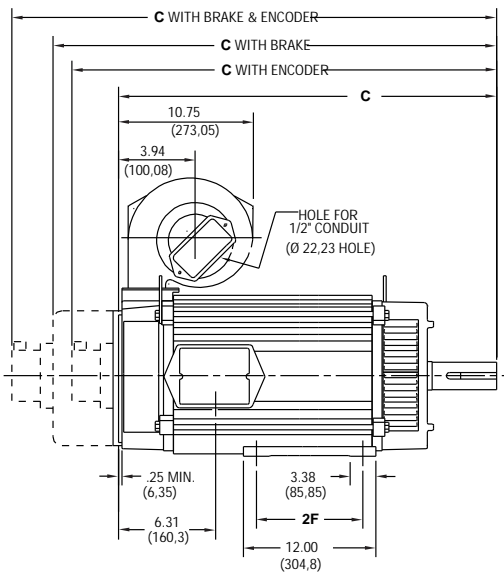
GENERAL  
INFORMATION

## E254 & E256 Frames, DPBV (Dripproof, Blower Ventilated)

### DRIVE END



### SIDE VIEW



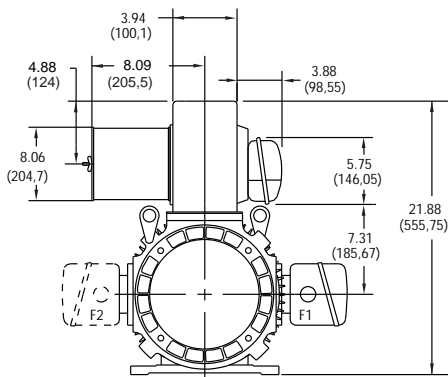
#### CALLOUT FOR "C" DIMENSION

MODEL	MOTOR ONLY	WITH ENCODER	WITH BRAKE	WITH BRAKE & ENCODER
E254	26.94 (684,28)	29.73 (755,1)	31.88 (809,8)	33.85 (859,8)
E256	31.44 (798,58)	34.23 (869,4)	36.38 (924,1)	38.35 (974,1)

MODEL	2F DIMENSION
E254	8.25 (209,56)
E256	10.00 (254)

Dimensions in ( ) are mm, all others in inches

### OPPOSITE DRIVE END



#### NOTE:

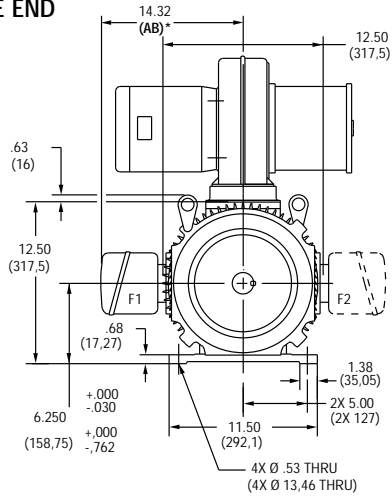
- Reference page 124 for conduit box dimensions.
- Conduit box can be rotated in 90° steps on its own axis and can be mounted on opposite side or top when specified.
- Blower can be rotated 180° about its axis. Size #3 blower is used on E254 & E256 frames. See Page 133.

\* See terminations, page 126.

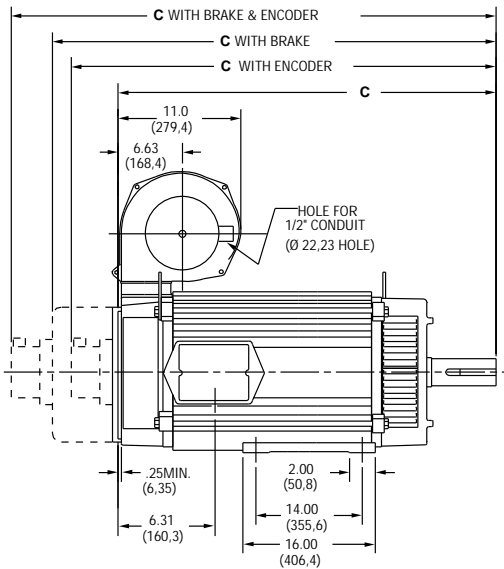
# PACTORQ MOTOR DIMENSIONS

## E258 & E259 Frames, DPBV (Dripproof, Blower Ventilated)

### DRIVE END



### SIDE VIEW

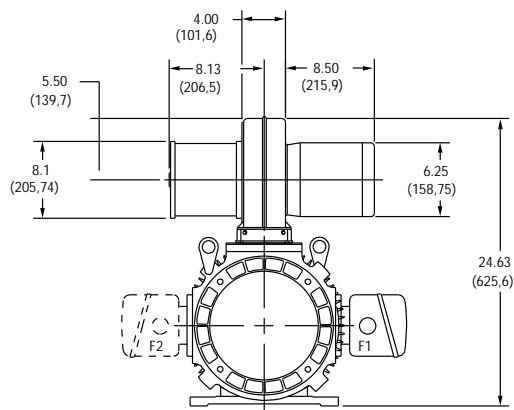


### CALLOUT FOR "C" DIMENSION

MODEL	MOTOR ONLY	WITH ENCODER	WITH BRAKE	WITH BRAKE & ENCODER
E258	33.81 (858,77)	36.60 (929,6)	38.76 (984,5)	40.72 (1034,3)
E259	36.81 (934,97)	39.60 (1005,8)	41.76 (1060,7)	43.72 (1110,5)

Dimensions in ( ) are mm, all others in inches

### OPPOSITE DRIVE END



### NOTE:

1. Reference page 124 for conduit box dimensions.
2. Conduit box can be rotated in 90° steps on its own axis and can be mounted on opposite side or top when specified.
3. Blower can be rotated 180° about its axis. Size #8 blower is used on E259 frames. See Frames 133.

\* See terminations, page 126.

# FACTORQ MOTOR DIMENSIONS

A

MOTORS

B

DRIVES

C

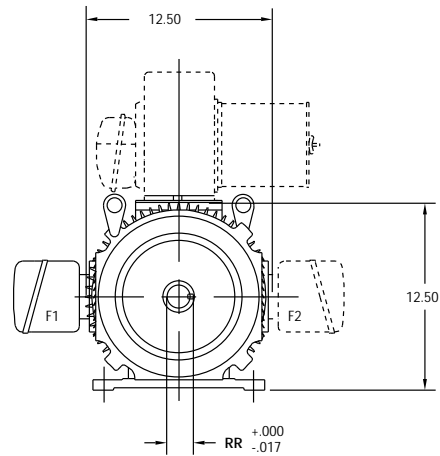
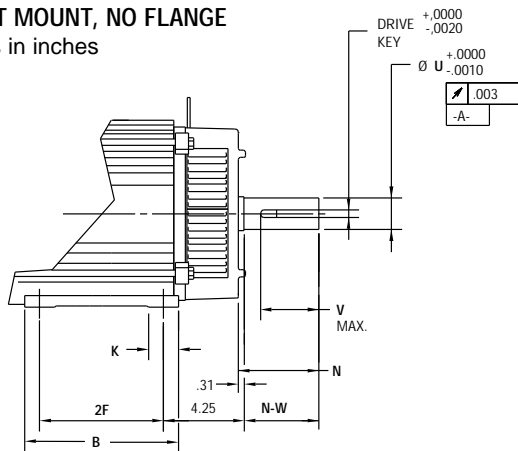
PRE-ENGINEERED  
DRIVE SYSTEMS

D

GENERAL  
INFORMATION

## E250 Frame Mounting, NEMA and Metric

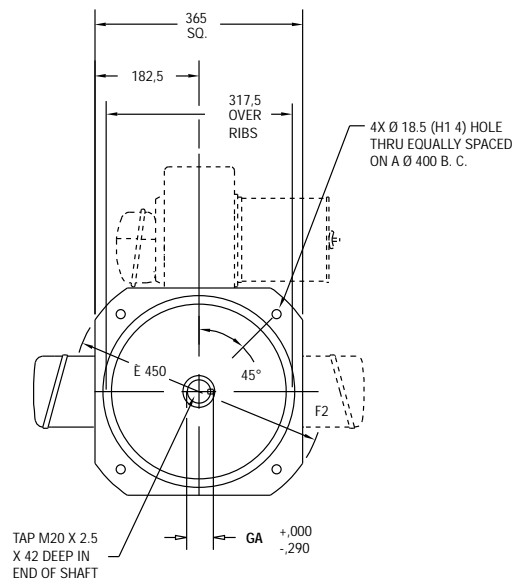
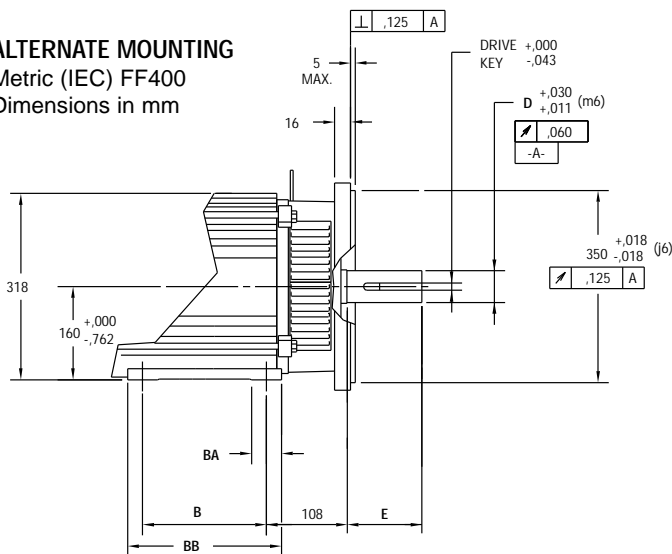
NEMA FOOT MOUNT, NO FLANGE  
Dimensions in inches



REFER TO DPBV DIMENSIONS ON PAGE 68 FOR FRONT VIEW FEET DIMENSIONS.

MODEL	2F	B	K	N	N-W	U	V	RR	Drive Key
E254	8.25	12.00	3.38	5.56	5.25	2.125	4.75	2.345	.500
E256	10.00	12.00	3.38	6.18	5.87	2.375	5.37	2.646	.625
E258	14.00	16.00	2.00	6.18	5.87	2.375	5.37	2.646	.625
E259	14.00	16.00	2.00	6.18	5.87	2.375	5.37	2.646	.625

ALTERNATE MOUNTING  
Metric (IEC) FF400  
Dimensions in mm



EXCEPT FOR FOOT HEIGHT REFER TO DPBV DIMENSIONS ON PAGE 68 FOR FRONT VIEW FEET DIMENSIONS.

MODEL	D	E	BA	B	BB	GA	Drive Key
E254	55	110	86	209,5	305	59	16
E256	55	110	86	254	305	59	16
E258	60	140	51	355,6	406	64	18
E259	60	140	51	355,6	406	64	18