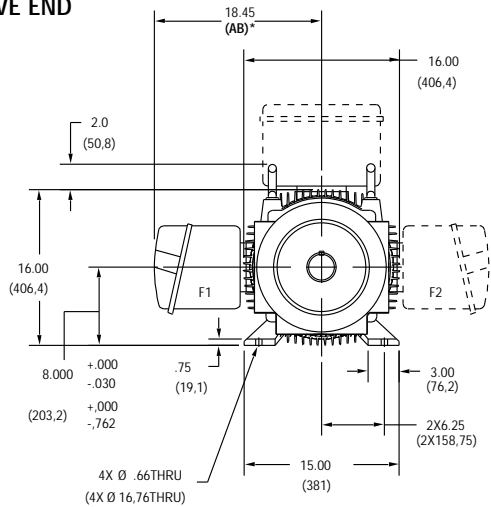


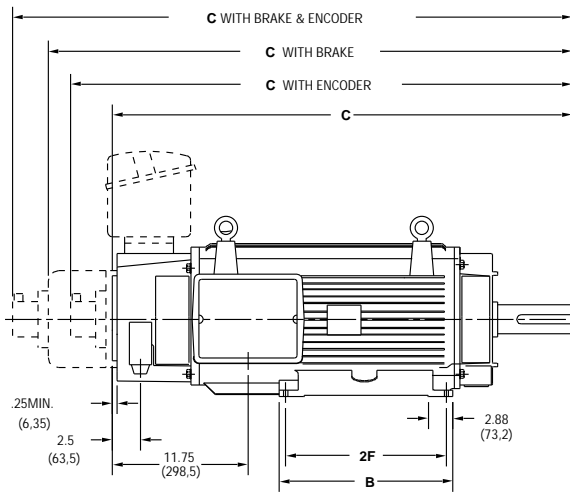
FACTORQ MOTOR DIMENSIONS

E320 Frames, TENV (Totally Enclosed, Non-Ventilated)

DRIVE END



SIDE VIEW

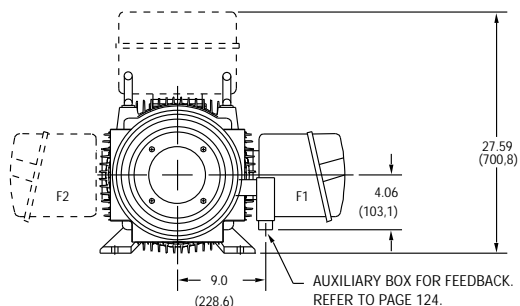


| CALLOUT FOR "C" DIMENSION | | | | |
|---------------------------|-------------------|-------------------|-------------------|----------------------|
| MODEL | MOTOR ONLY | WITH ENCODER | WITH BRAKE | WITH BRAKE & ENCODER |
| E328 | 44.33 (1126) | 47.12 (1196,8) | 52.09 (1323,1) | 54.06 (1373,1) |
| E32B | 51.08 (1297,4) | 53.87 (1368,3) | 58.54 (1494,5) | 60.81 (1544,6) |
| E32D | 57.83 (1468,9) | 60.62 (1539,7) | 65.59 (1666) | 67.56 (1716) |

| MODEL | 2F DIMENSION | B DIMENSION |
|-------|------------------|------------------|
| E328 | 16.00 (406,4) | 17.88 (454,2) |
| E32B | 22.00 (558,8) | 23.88 (607) |
| E32D | 28.00 (711,2) | 29.88 (759) |

Dimensions in () are mm, all others in inches

OPPOSITE DRIVE END



NOTE:

- Reference page 124 for conduit box dimensions.
- Conduit box can be rotated in 90° steps on its own axis and can be mounted on opposite side or top when specified.

* See terminations, page 126.

A

MOTORS

B

DRIVES

C

PRE-ENGINEERED
DRIVE SYSTEMS

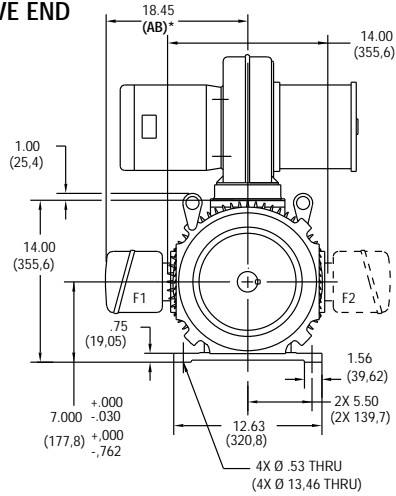
D

GENERAL
INFORMATION

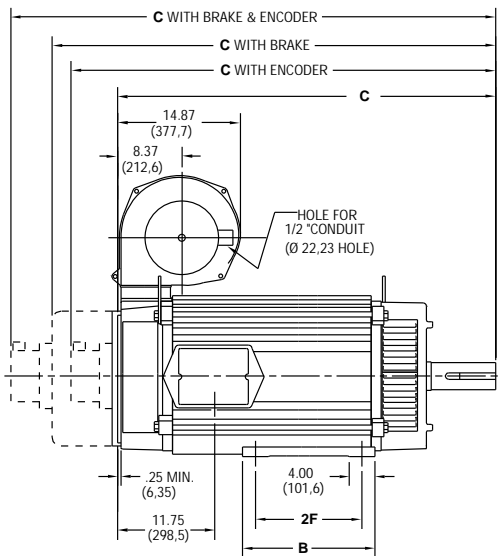
FACTORQ MOTOR DIMENSIONS

E320 Frames, DPBV (Dripproof, Blower Ventilated)

DRIVE END



SIDE VIEW

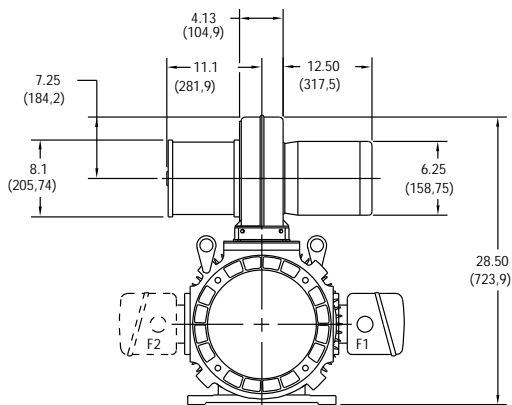


| CALLOUT FOR "C" DIMENSION | | | | |
|---------------------------|-------------------|-------------------|-------------------|----------------------|
| MODEL | MOTOR ONLY | WITH ENCODER | WITH BRAKE | WITH BRAKE & ENCODER |
| E328 | 44.33 (1126) | 47.12 (1196,8) | 52.09 (1323,1) | 54.06 (1373,1) |
| E32B | 51.08 (1297,4) | 53.87 (1368,3) | 58.54 (1494,5) | 60.81 (1544,6) |
| E32D | 57.83 (1468,9) | 60.62 (1539,7) | 65.59 (1666) | 67.56 (1716) |

| MODEL | 2F DIMENSION | B DIMENSION |
|-------|------------------|------------------|
| E328 | 16.00 (406,4) | 17.88 (454,2) |
| E32B | 22.00 (558,8) | 23.88 (607) |
| E32D | 28.00 (711,2) | 29.88 (759) |

Dimensions in () are mm, all others in inches

OPPOSITE DRIVE END



NOTE:

1. Reference page 124 for conduit box dimensions.
2. Conduit box can be rotated in 90° steps on its own axis and can be mounted on opposite side or top when specified.
3. Blower can be rotated 180° about its axis. Size #10 blower is used on E320 frames. See page 133.

* See terminations, page 126.

FACTORQ MOTOR DIMENSIONS

A

MOTORS

B

DRIVES

C

PRE-ENGINEERED
DRIVE SYSTEMS

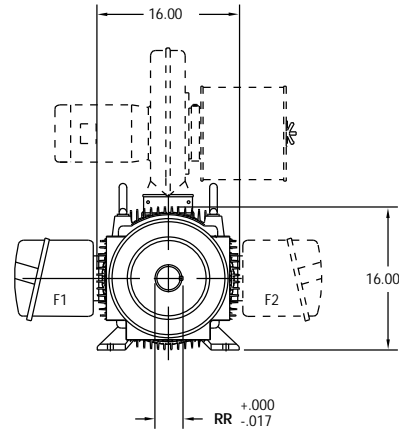
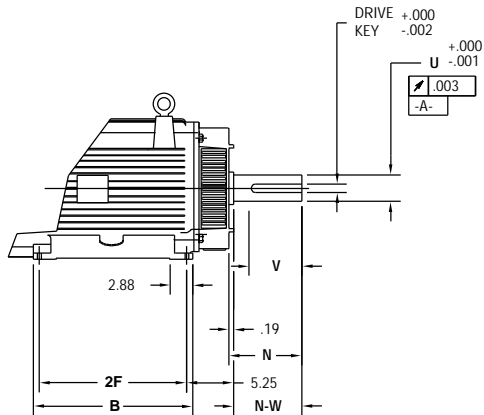
D

GENERAL
INFORMATION

E320 Frame Mounting, NEMA and Metric

NEMA FOOT MOUNT, NO FLANGE

Dimensions in inches



REFER TO DPBV DIMENSIONS ON PAGE 74 FOR FRONT VIEW FEET DIMENSIONS

| MODEL | 2F | B | N | N-W | U | V | RR | Drive Key |
|-------|-------|-------|------|------|-------|------|-------|-----------|
| E328 | 16.00 | 17.88 | 5.94 | 5.75 | 2.875 | 5.25 | 3.200 | .750 |
| E32B | 22.00 | 23.88 | 6.69 | 6.50 | 3.250 | 6.00 | 3.581 | .750 |
| E32D | 28.00 | 29.88 | 7.44 | 7.25 | 3.625 | 6.75 | 4.009 | .875 |

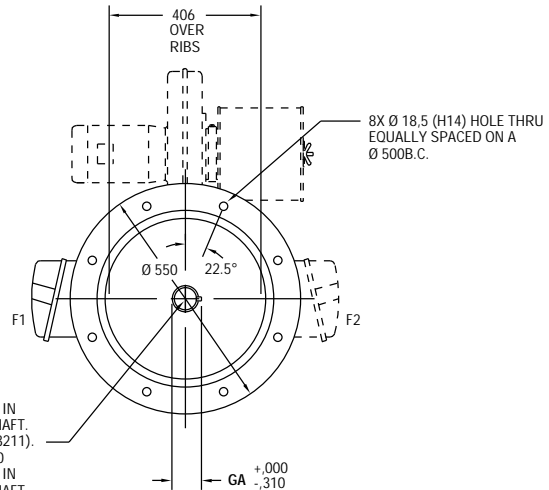
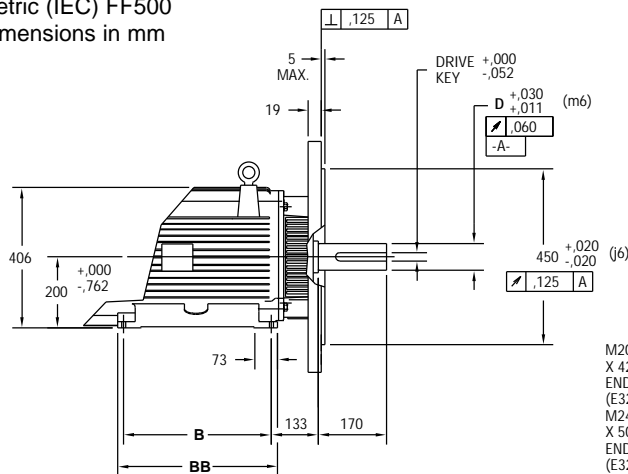
SHAFT DIMENSIONS FOR BELT DUTY

| MODEL | N | N-W | U | V | RR | Drive Key |
|-------|------|------|-------|------|-------|-----------|
| E328 | 6.69 | 6.50 | 3.250 | 6.00 | 3.581 | .750 |
| E32B | 7.44 | 7.25 | 3.625 | 6.75 | 4.009 | .875 |
| E32D | 8.44 | 8.25 | 4.125 | 7.75 | 4.563 | 1.000 |

ALTERNATE MOUNTING

Metric (IEC) FF500

Dimensions in mm



M20 X 2.5 X 42 DEEP IN END OF SHAFT. (E328 & E3211).
M24 X 3.00 X 50 DEEP IN END OF SHAFT. (E3213).

EXCEPT FOR FOOT HEIGHT REFER TO DPBV DIMENSIONS ON PAGE 74 FOR FRONT VIEW FEET DIMENSIONS

| MODEL | D | B | BB | GA | Drive Key |
|-------|----|-------|-----|----|-----------|
| E328 | 80 | 406,4 | 454 | 85 | 22 |
| E32B | 80 | 558,8 | 607 | 85 | 22 |
| E32D | 90 | 711,2 | 759 | 95 | 25 |