

POWERTEC MOTOR DIMENSIONS

A

MOTORS

B

DRIVES

C

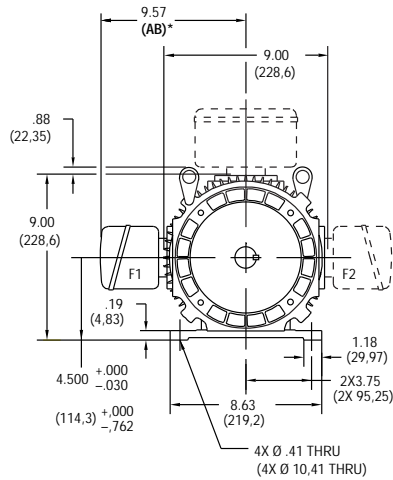
PRE-ENGINEERED
DRIVE SYSTEMS

D

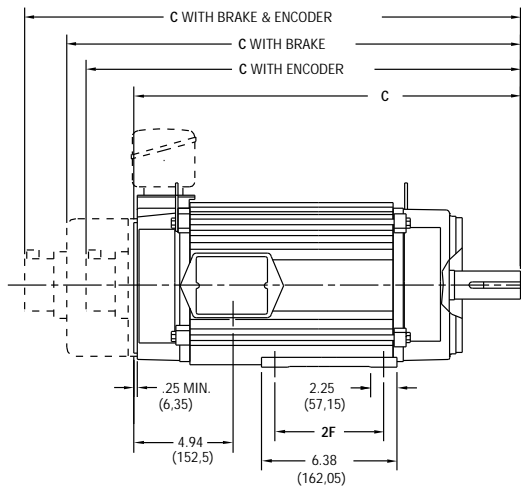
GENERAL
INFORMATION

F180 Frames, TENV (Totally Enclosed, Non-Ventilated)

DRIVE END



SIDE VIEW

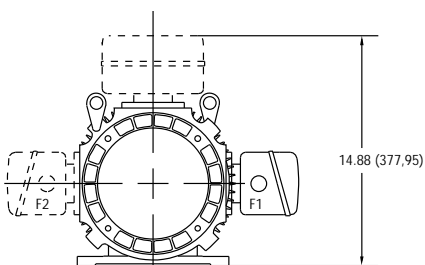


CALLOUT FOR "C" DIMENSION			
MODEL	MOTOR ONLY	WITH ENCODER	WITH BRAKE
F182	$\frac{16.63}{(422,4)}$	$\frac{19.42}{(493,3)}$	$\frac{20.52}{(521,2)}$
F184	$\frac{20.44}{(519,2)}$	$\frac{23.23}{(590)}$	$\frac{24.33}{(618)}$

MODEL	2F DIMENSION
F182	$\frac{4.50}{(114,3)}$
F184	$\frac{5.50}{(139,7)}$

Dimensions in () are mm, all others in inches

OPPOSITE DRIVE END



NOTE:

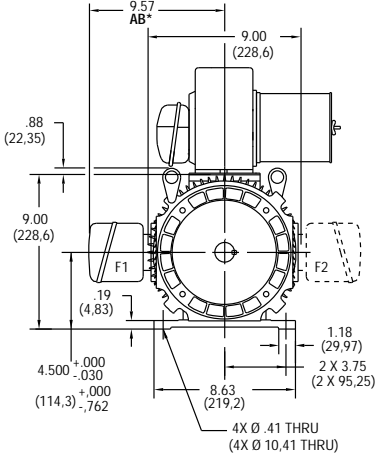
- Reference page 124 for conduit box dimensions.
- Conduit box can be rotated in 90° steps on its own axis and can be mounted on opposite side or top when specified.

* See terminations, page 126.

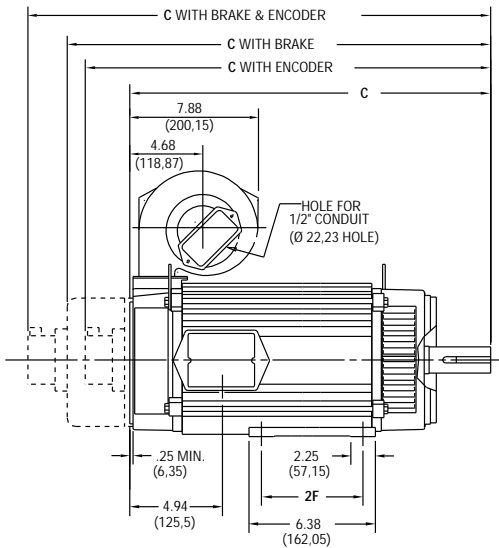
POWERTEC MOTOR DIMENSIONS

F180 Frames, DPBV (Dripproof, Blower Ventilated)

DRIVE END



SIDE VIEW

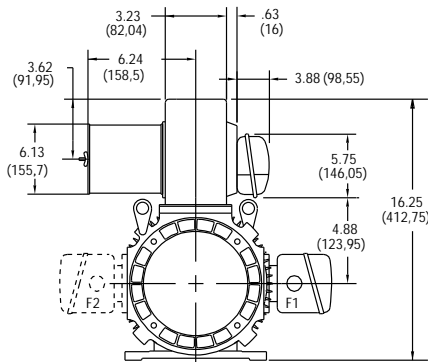


CALLOUT FOR "C" DIMENSION			
MODEL	MOTOR ONLY	WITH ENCODER	WITH BRAKE
F182	16.63 (422,4)	19.42 (493,3)	20.52 (521,2)
F184	20.44 (519,2)	23.23 (590)	24.33 (618)

MODEL	2F DIMENSION
F182	4.50 (114,3)
F184	5.50 (139,7)

Dimensions in () are mm, all others in inches

OPPOSITE DRIVE END



NOTE:

1. Conduit box can be rotated in 90° steps on its own axis and can be mounted on opposite side or top when specified.
2. Blower can be rotated 180° about its axis. Size #2 blower is used on F180 frames. See Page 133.

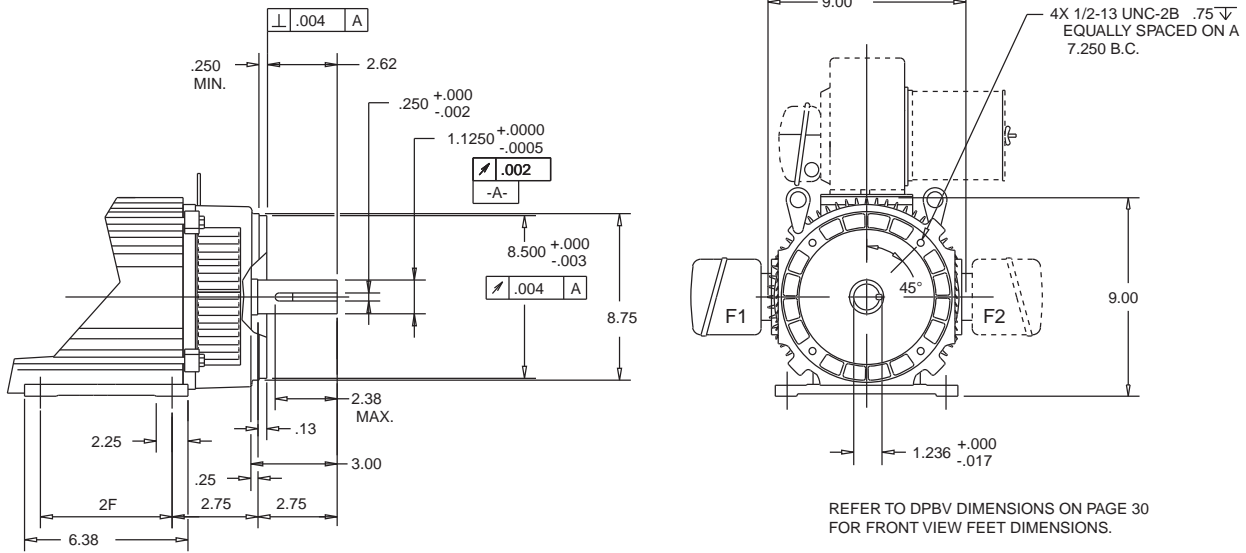
* See terminations, page 126.

POWERTEC MOTOR DIMENSIONS

F180 Frame Mounting, NEMA

NEMA C FACE

Dimensions in inches



MODEL	2F DIMENSION
F182	4.50
F184	5.50

A

MOTORS

B

DRIVES

C

PRE-ENGINEERED
DRIVE SYSTEMS

D

GENERAL
INFORMATION