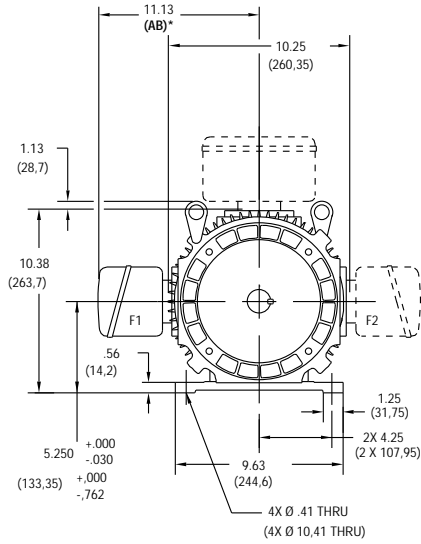


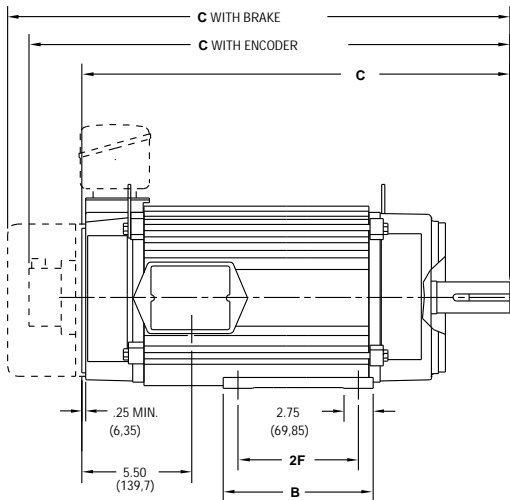
# POWERTEC MOTOR DIMENSIONS

## F210 Frames, TENV (Totally Enclosed, Non-Ventilated)

### DRIVE END



### SIDE VIEW

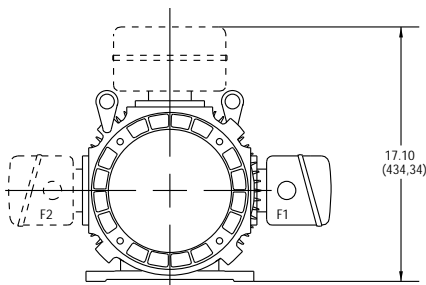


CALLOUT FOR "C" DIMENSION				
MODEL	MOTOR ONLY	WITH ENCODER	WITH BRAKE	WITH BRAKE & ENCODER
F213	22.25 (565,15)	25.04 (636)	26.14 (664)	28.10 (713,7)
F215	26.88 (682,75)	29.67 (753,6)	30.77 (781,6)	32.73 (831,3)

MODEL	2F DIMENSION	B DIMENSION
F213	5.50 (139,7)	8.38 (212,85)
F215	7.00 (177,8)	8.38 (212,85)

Dimensions in ( ) are mm, all others in inches

### OPPOSITE DRIVE END



### NOTE:

1. Conduit box can be rotated in 90° steps on its own axis and can be mounted on opposite side or top when specified.

# POWERTEC MOTOR DIMENSIONS

A

MOTORS

B

DRIVES

C

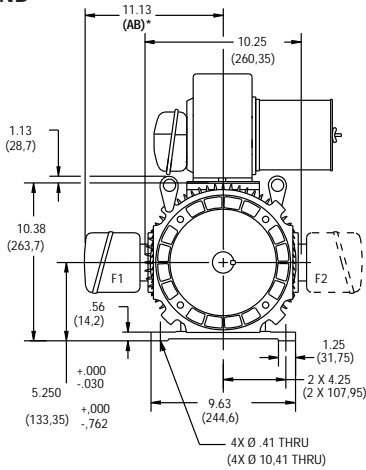
PRE-ENGINEERED  
DRIVE SYSTEMS

D

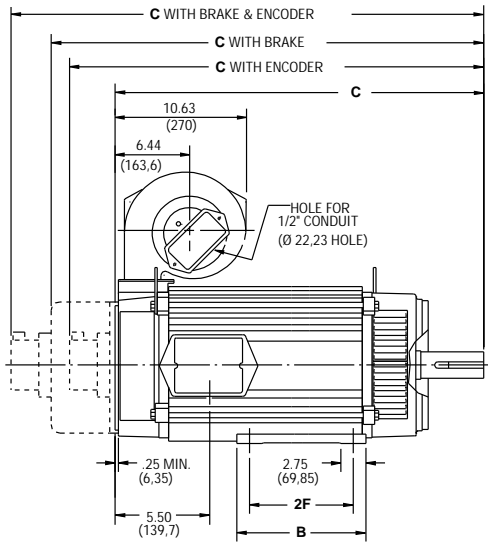
GENERAL  
INFORMATION

## F210 Frames, DPBV (Dripproof, Blower Ventilated)

### DRIVE END



### SIDE VIEW



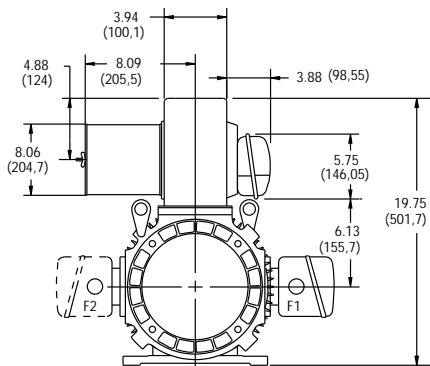
### CALLOUT FOR "C" DIMENSION

MODEL	MOTOR ONLY	WITH ENCODER	WITH BRAKE	WITH BRAKE & ENCODER
F213	22.25 (565,15)	25.04 (636)	26.14 (664)	28.10 (713,7)
F215	26.88 (682,75)	29.67 (753,6)	30.77 (781,6)	32.73 (831,3)

MODEL	2F DIMENSION	B DIMENSION
F213	5.50 (139,7)	8.38 (212,85)
F215	7.00 (177,8)	8.38 (212,85)

Dimensions in ( ) are mm, all others in inches

### OPPOSITE DRIVE END



### NOTE:

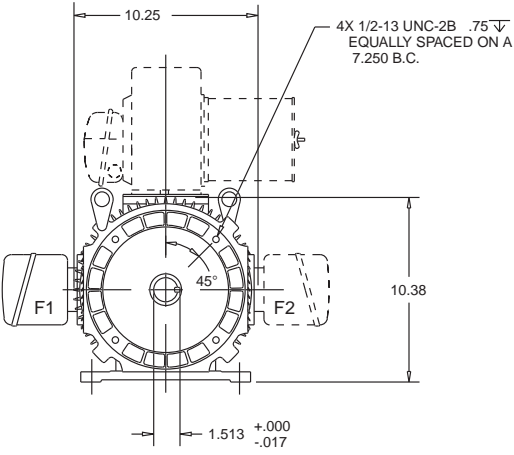
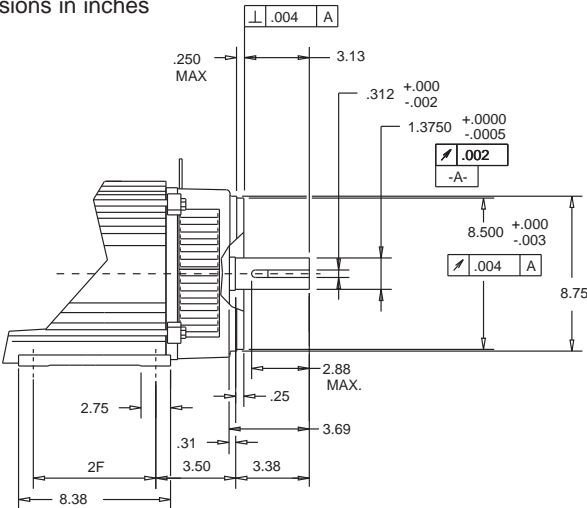
1. Conduit box can be rotated in 90° steps on its own axis and can be mounted on opposite side or top when specified.
2. Blower can be rotated 180° about its axis. Size #3 blower is used on F210 frames. See Page 133.

\* See terminations, page 126.

# POWERTEC MOTOR DIMENSIONS

## F210 Frame Mounting, NEMA

NEMA C FACE  
Dimensions in inches



REFER TO DPBV DIMENSIONS ON PAGE 33 FOR FRONT VIEW FEET DIMENSIONS.

MODEL	2F DIMENSION
F213	5.50
F215	7.00