

POWERTEC MOTOR DIMENSIONS

A

MOTORS

B

DRIVES

C

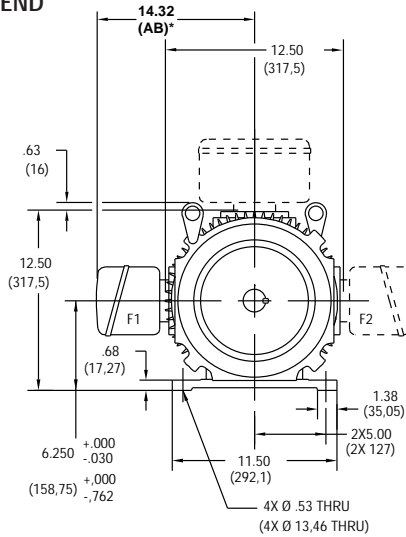
PRE-ENGINEERED
DRIVE SYSTEMS

D

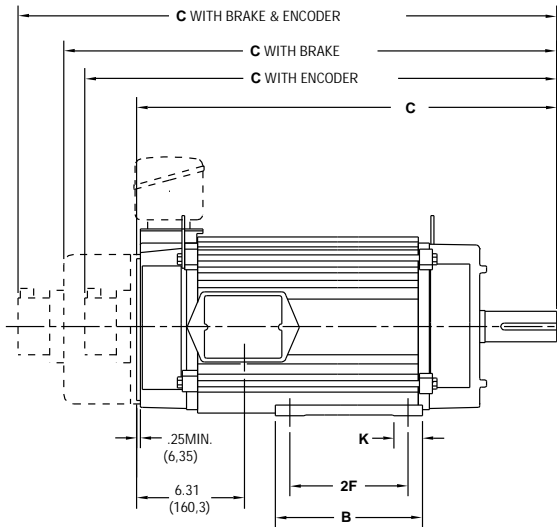
GENERAL
INFORMATION

F250 Frames, TENV (Totally Enclosed, Non-Ventilated)

DRIVE END



SIDE VIEW

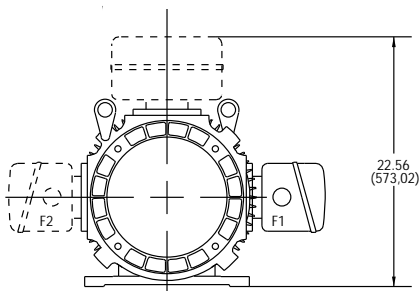


CALLOUT FOR "C" DIMENSION				
MODEL	MOTOR ONLY	WITH ENCODER	WITH BRAKE	WITH BRAKE & ENCODER
F254	26.94 (684,28)	29.73 (755,1)	31.88 (809,8)	33.85 (859,8)
F256	31.44 (798,58)	34.23 (869,4)	36.38 (924,1)	38.35 (974,1)
F259	36.81 (934,97)	39.60 (1005,8)	41.76 (1060,7)	43.72 (1110,5)

MODEL	2F DIMENSION	B	K
F254	8.25 (209,55)	12.00 (304,8)	3.38 (85,85)
F256	10.00 (254)	12.00 (304,8)	3.38 (85,85)
F259	14.00 (355,6)	16.00 (406,4)	2.00 (50,8)

Dimensions in () are mm, all others in inches

OPPOSITE DRIVE END



NOTE:

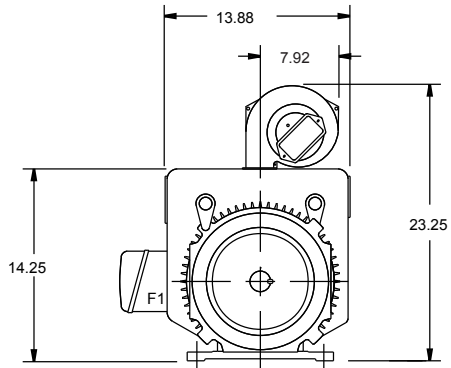
- Reference page 124 for conduit box dimensions.
- Conduit box can be rotated in 90° steps on its own axis and can be mounted on opposite side or top when specified.

* See terminations, page 126.

POWERTEC MOTOR DIMENSIONS

F250 Frames, TEAO (Totally Enclosed, Air Over)

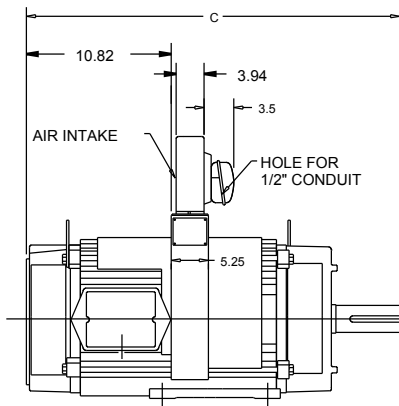
DRIVE END



REFERENCE PAGE 124 FOR CONDUIT BOX DIMENSIONS.

REFER TO TENV DIMENSIONS ON PAGE 35 FOR FRONT VIEW FEET DIMENSIONS.

SIDE VIEW



MODEL	C DIMENSION
F254	25.69
F256	29.56
F259	34.69

1. CONDUIT BOX CAN BE ROTATED IN 90° STEPS ON ITS OWN AXIS AND CAN BE MOUNTED ON OPPOSITE SIDE WHEN SPECIFIED.
2. BLOWER CAN BE ROTATED 180° ABOUT ITS AXIS.

POWERTEC MOTOR DIMENSIONS

A

MOTORS

B

DRIVES

C

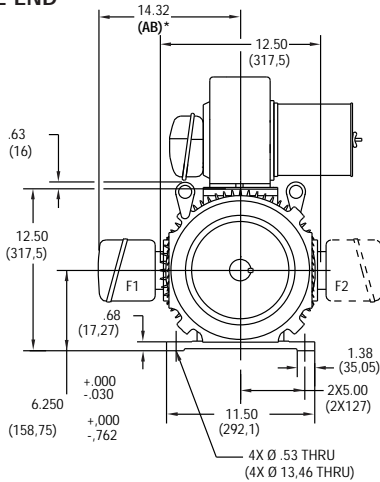
PRE-ENGINEERED
DRIVE SYSTEMS

D

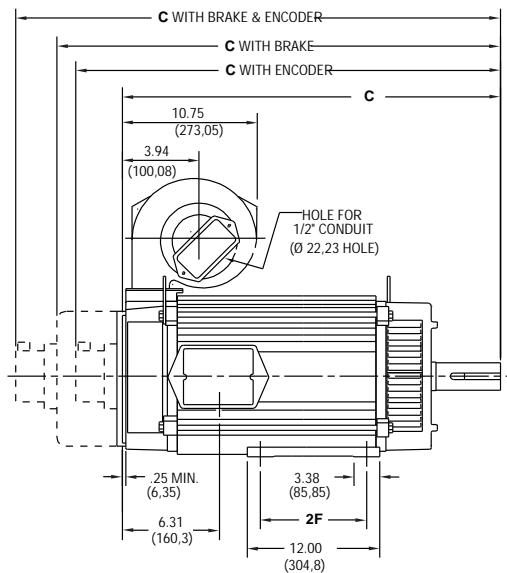
GENERAL
INFORMATION

F254 & F256 Frames, DPBV (Dripproof, Blower Ventilated)

DRIVE END



SIDE VIEW

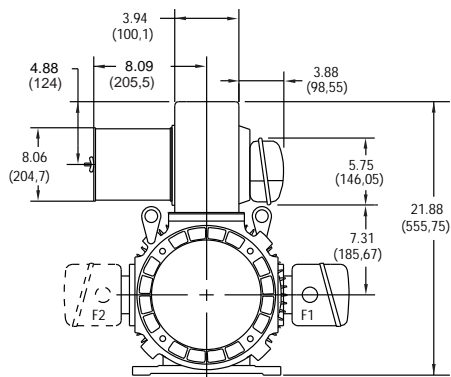


CALLOUT FOR "C" DIMENSION				
MODEL	MOTOR ONLY	WITH ENCODER	WITH BRAKE	WITH BRAKE & ENCODER
F254	<u>26.94</u> (684,28)	<u>29.73</u> (755,1)	<u>31.88</u> (809,8)	<u>33.85</u> (859,8)
F256	<u>31.44</u> (798,58)	<u>34.23</u> (869,4)	<u>36.38</u> (924,1)	<u>38.35</u> (974,1)

MODEL	2F DIMENSION
F254	<u>8.25</u> (209,56)
F256	<u>10.00</u> (254)

Dimensions in () are mm, all others in inches

OPPOSITE DRIVE END



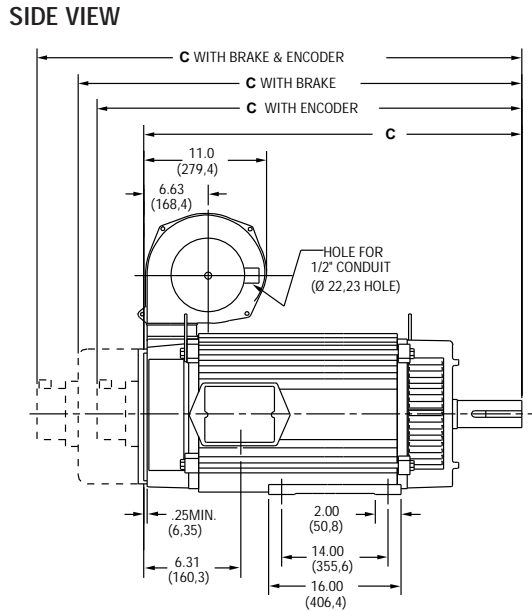
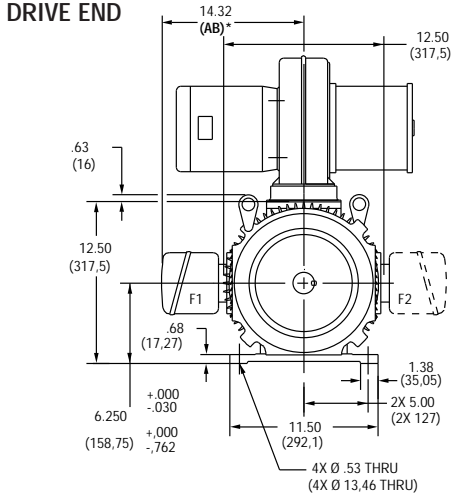
NOTE:

1. Reference page 124 for conduit box dimensions.
2. Conduit box can be rotated in 90° steps on its own axis and can be mounted on opposite side or top when specified.
3. Blower can be rotated 180° about its axis. Size #3 blower is used on F254 & F256 frames. See Page 133.

* See terminations, page 126.

POWERTEC MOTOR DIMENSIONS

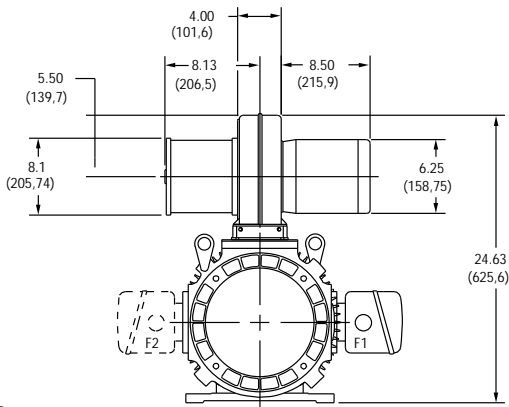
F259 Frames, DPBV (Dripproof, Blower Ventilated)



CALLOUT FOR "C" DIMENSION				
MODEL	MOTOR ONLY	WITH ENCODER	WITH BRAKE	WITH BRAKE & ENCODER
F259	36.81 (934,97)	39.60 (1005,8)	41.76 (1060,7)	43.72 (1110,5)

Dimensions in () are mm, all others in inches

OPPOSITE DRIVE END



NOTE:

1. Reference page 124 for conduit box dimensions.
2. Conduit box can be rotated in 90° steps on its own axis and can be mounted on opposite side or top when specified.
3. Blower can be rotated 180° about its axis. Size #8 blower is used on F259 frames. See Frames 133.

* See terminations, page 126.

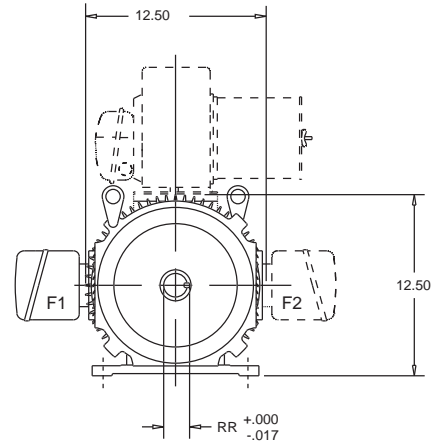
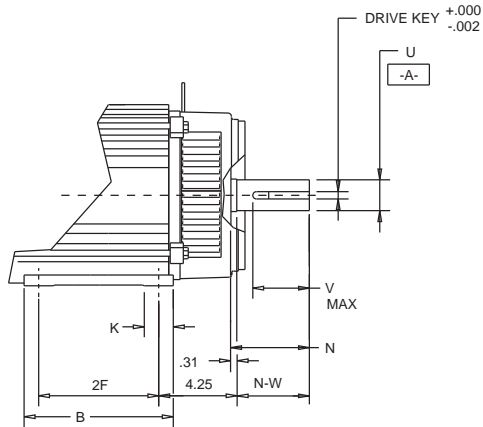
POWERTEC MOTOR DIMENSIONS

A

MOTORS

F250 Frame Mounting, NEMA

NEMA FOOT MOUNT, NO FLANGE
Dimensions in inches



REFER TO DPBV DIMENSIONS ON PAGE 37 AND 38
FOR FRONT VIEW FEET DIMENSIONS.

MODEL	2F	B	K	N	N-W	U	V	RR	DRIVE KEY
F254	8.25	12.00	3.38	4.31	4.00	1.625	3.50	1.791	.375
F256	10.00	12.00	3.38	4.31	4.00	1.625	3.50	1.791	.375
F259	14.00	16.00	2.00	5.56	5.25	2.125	4.75	2.345	.500

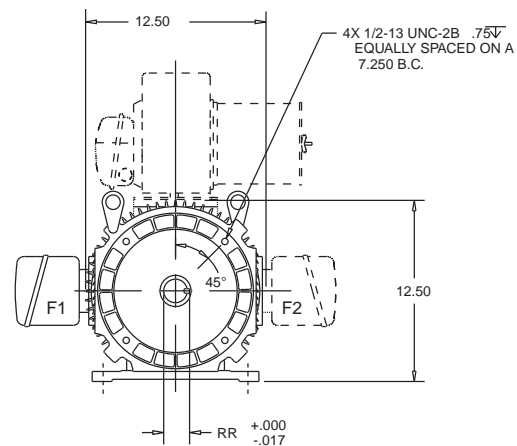
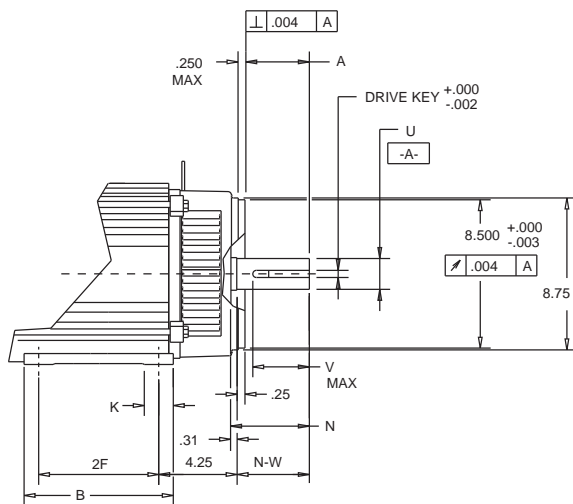
SHAFT DIAMETER TOLERANCE
TO 1.500 DIA. +.0000 -.0005
ABOVE 1.500 DIA. +.000 -.001
SHAFT RUNOUT:
TO 1.625 DIA. .002 TIR
ABOVE 1.625 DIA. .003 TIR

B

DRIVES

NEMA C FACE

Dimensions in inches



REFER TO DPBV DIMENSIONS ON PAGE 37 AND 38
FOR FRONT VIEW FEET DIMENSIONS.

MODEL	2F	B	K	AH	N	N-W	U	V	RR	DRIVE KEY
F254	8.25	12.00	3.38	3.75	4.31	4.00	1.625	3.50	1.791	.375
F256	10.00	12.00	3.38	3.75	4.31	4.00	1.625	3.50	1.791	.375
F259	14.00	16.00	2.00	5.00	5.56	5.25	2.125	4.75	2.345	.500

SHAFT DIAMETER TOLERANCE
TO 1.500 DIA. +.0000 -.0005
ABOVE 1.500 DIA. +.000 -.001
SHAFT RUNOUT:
TO 1.625 DIA. .002 TIR
ABOVE 1.625 DIA. .003 TIR

C

PRE-ENGINEERED
DRIVE SYSTEMS

D

GENERAL
INFORMATION