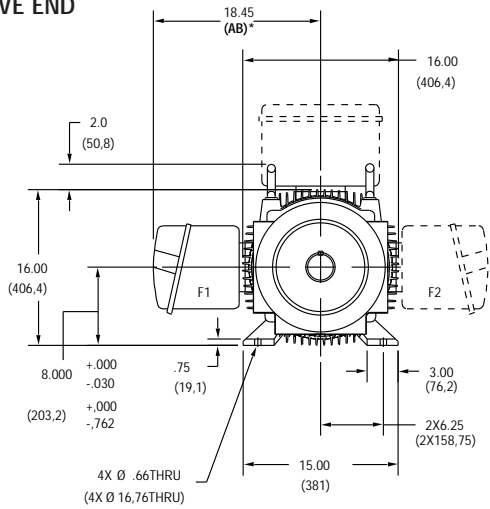


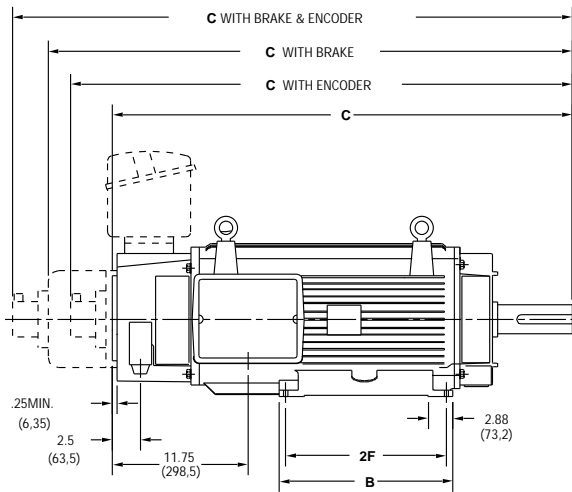
# POWERTEC MOTOR DIMENSIONS

## F320 Frames, TENV (Totally Enclosed, Non-Ventilated)

DRIVE END



SIDE VIEW

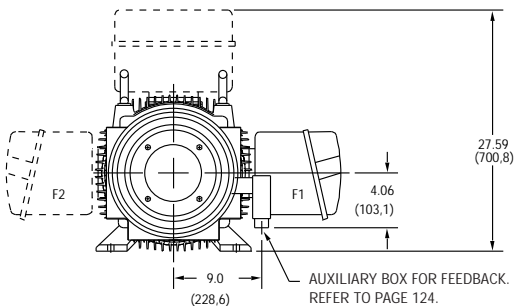


CALLOUT FOR "C" DIMENSION				
MODEL	MOTOR ONLY	WITH ENCODER	WITH BRAKE	WITH BRAKE & ENCODER
F328	44.33 (1126)	47.12 (1196,8)	52.09 (1323,1)	54.06 (1373,1)
F32B	51.08 (1297,4)	53.87 (1368,3)	58.54 (1494,5)	60.81 (1544,6)
F32D	57.83 (1468,9)	60.62 (1539,7)	65.59 (1666)	67.56 (1716)

MODEL	2F DIMENSION	B DIMENSION
F328	16.00 (406,4)	17.88 (454,2)
F32B	22.00 (558,8)	23.88 (607)
F32D	28.00 (711,2)	29.88 (759)

Dimensions in ( ) are mm, all others in inches

OPPOSITE DRIVE END



NOTE:

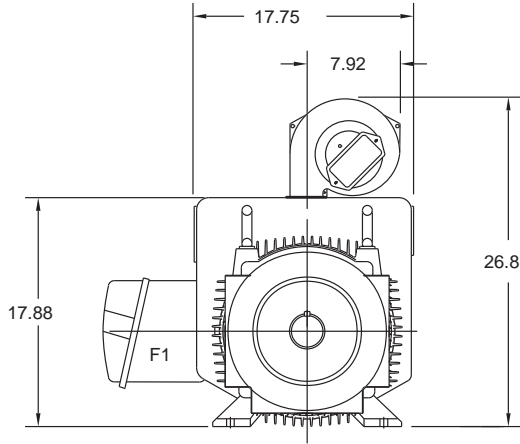
1. Reference page 126 for conduit box dimensions.
2. Conduit box can be rotated in 90° steps on its own axis and can be mounted on opposite side or top when specified.

\* See terminations, page 126.

# POWERTEC MOTOR DIMENSIONS

## F320 Frames, TEAO (Totally Enclosed, Air Over)

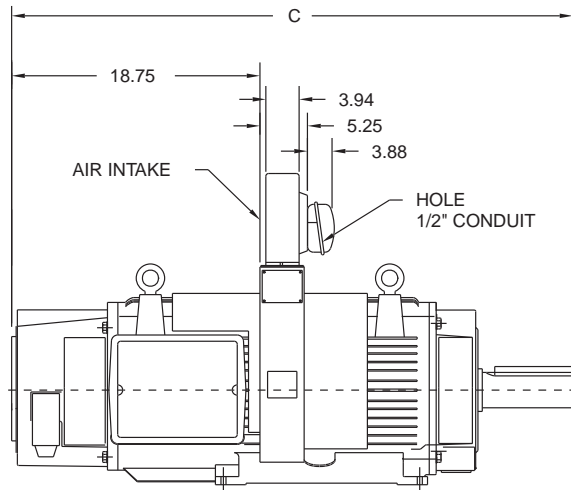
DRIVE END



REFERENCE PAGE 124 FOR  
CONDUIT BOX DIMENSIONS

REFER TO TENV DIMENSIONS ON PAGE 44  
FOR FRONT VIEW FEET DIMENSIONS.

SIDE VIEW



MODEL	C DIMENSION
F328	45.75
F32B	51.75
F32D	57.75

1. CONDUIT BOX CAN BE ROTATED IN 90° STEPS ON ITS OWN AXIS AND CAN BE MOUNTED ON OPPOSITE SIDE WHEN SPECIFIED.
2. BLOWER CAN BE ROTATED 180° ABOUT ITS AXIS.

A

MOTORS

B

DRIVES

C

PRE-ENGINEERED  
DRIVE SYSTEMS

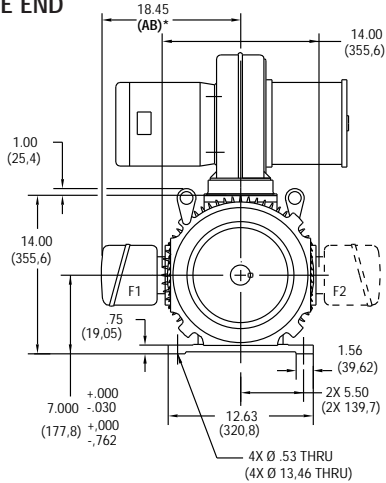
D

GENERAL  
INFORMATION

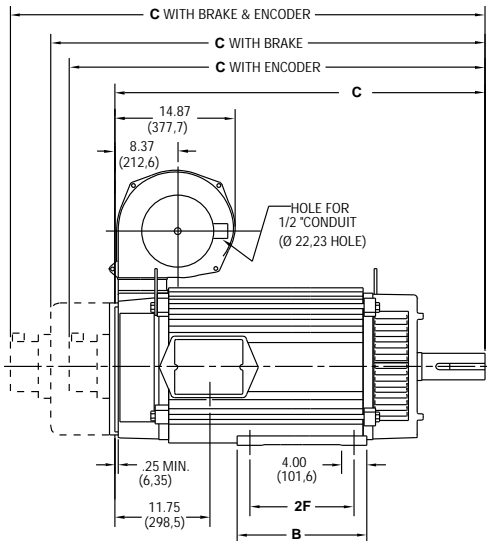
# POWERTEC MOTOR DIMENSIONS

## F320 Frames, DPBV (Dripproof, Blower Ventilated)

### DRIVE END



### SIDE VIEW

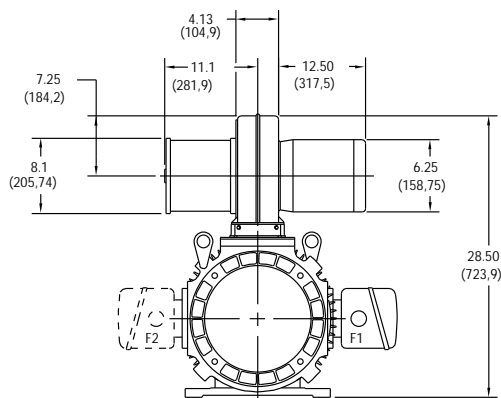


CALLOUT FOR "C" DIMENSION				
MODEL	MOTOR ONLY	WITH ENCODER	WITH BRAKE	WITH BRAKE & ENCODER
F328	44.33 (1126)	47.12 (1196,8)	52.09 (1323,1)	54.06 (1373,1)
F32B	51.08 (1297,4)	53.87 (1368,3)	58.54 (1494,5)	60.81 (1544,6)
F32D	57.83 (1468,9)	60.62 (1539,7)	65.59 (1666)	67.56 (1716)

MODEL	2F DIMENSION	B DIMENSION
F328	16.00 (406,4)	17.88 (454,2)
F32B	22.00 (558,8)	23.88 (607)
F32D	28.00 (711,2)	29.88 (759)

Dimensions in ( ) are mm, all others in inches

### OPPOSITE DRIVE END



#### NOTE:

- Reference page 124 for conduit box dimensions.
- Conduit box can be rotated in 90° steps on its own axis and can be mounted on opposite side or top when specified.
- Blower can be rotated 180° about it's axis. Size #10 blower is used on F320 frames. See page 133.

\* See terminations, page 126.

# POWERTEC MOTOR DIMENSIONS

A

MOTORS

B

DRIVES

C

PRE-ENGINEERED  
DRIVE SYSTEMS

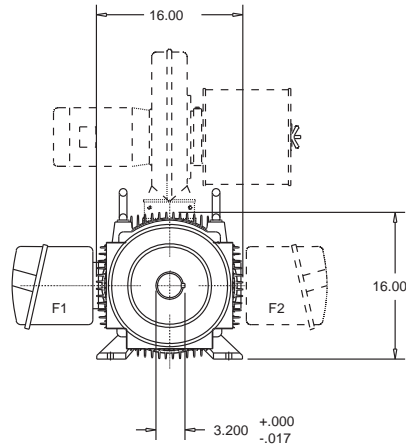
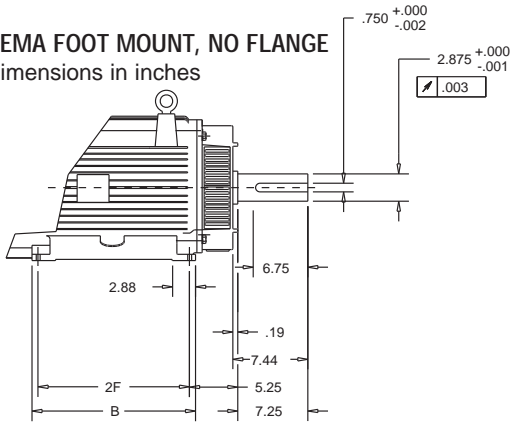
D

GENERAL  
INFORMATION

## F320 Frame Mounting, NEMA

### NEMA FOOT MOUNT, NO FLANGE

Dimensions in inches

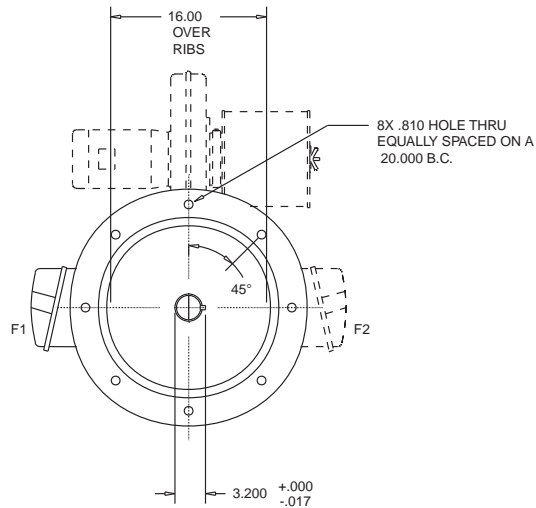
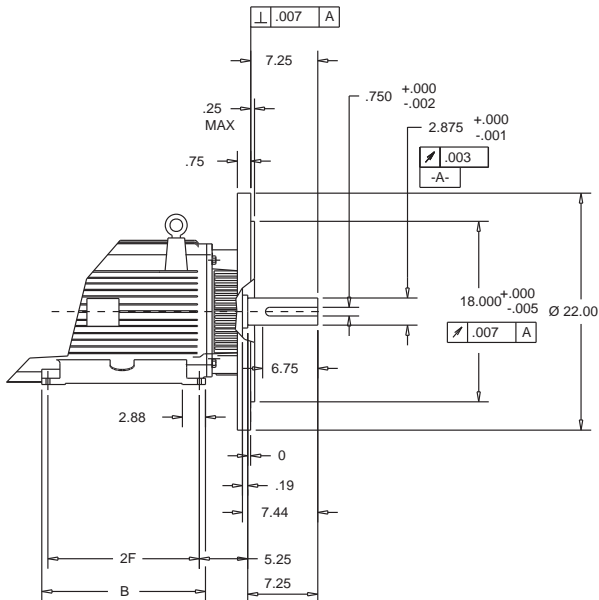


REFER TO DPBV DIMENSIONS ON PAGE 46  
FOR FRONT VIEW FEET DIMENSIONS.

MODEL	2F	B
F328	16.00	17.88
F32B	22.00	23.88
F32D	28.00	29.88

### NEMA D FLANGE

Dimensions in inches



REFER TO DPBV DIMENSIONS ON PAGE 46  
FOR FRONT VIEW FEET DIMENSIONS.

MODEL	2F	B
F328	16.00	17.88
F32B	22.00	23.88
F32D	28.00	29.88