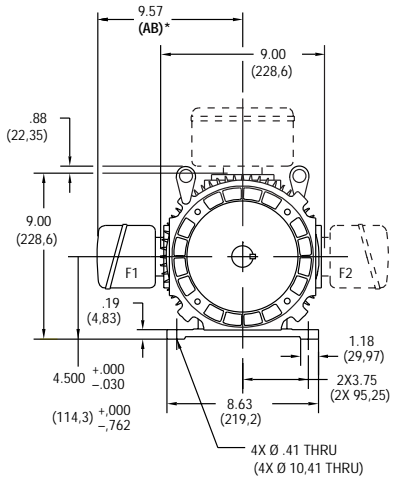


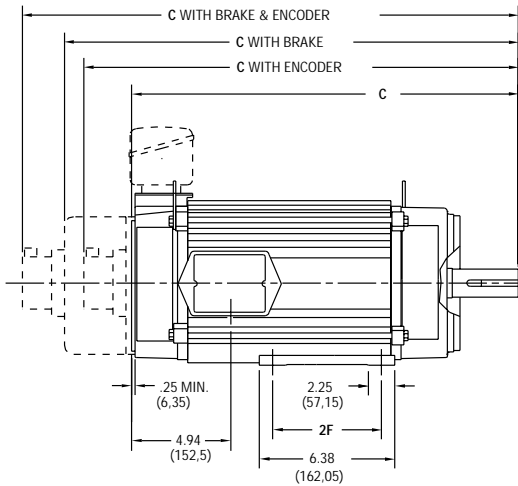
FACTORQ MOTOR DIMENSIONS

E180 Frames, TENV (Totally Enclosed, Non-Ventilated)

DRIVE END



SIDE VIEW

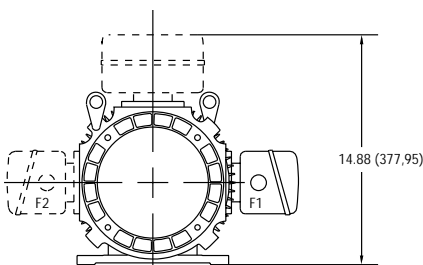


CALLOUT FOR "C" DIMENSION				
MODEL	MOTOR ONLY	WITH ENCODER	WITH BRAKE	WITH BRAKE & ENCODER
E182	16.63 (422,4)	19.42 (493,3)	20.52 (521,2)	22.48 (571)
E183	20.44 (519,2)	22.23 (590)	24.33 (618)	26.29 (667,8)
E184	20.44 (519,2)	23.23 (590)	24.33 (618)	26.29 (667,8)

MODEL	2F DIMENSION
E182	4.50 (114,3)
E183	5.50 (139,7)
E184	5.50 (139,7)

Dimensions in () are mm, all others in inches

OPPOSITE DRIVE END



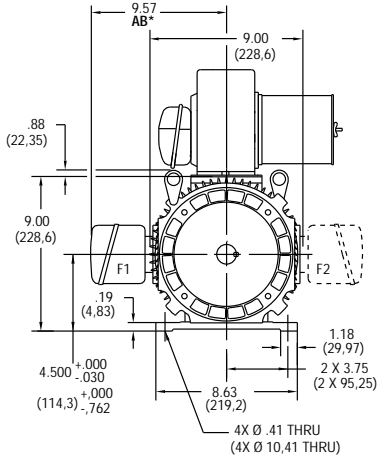
- NOTE:
- Reference page 124 for conduit box dimensions.
 - Conduit box can be rotated in 90° steps on its own axis and can be mounted on opposite side or top when specified.

* See terminations, page 126.

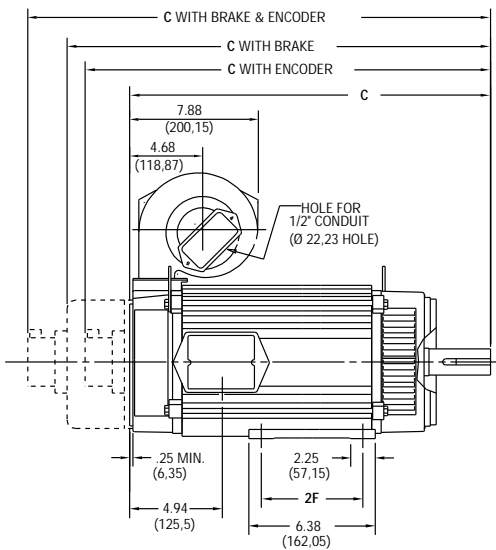
PACTORQ MOTOR DIMENSIONS

E180 Frames, DPBV (Dripproof, Blower Ventilated)

DRIVE END



SIDE VIEW



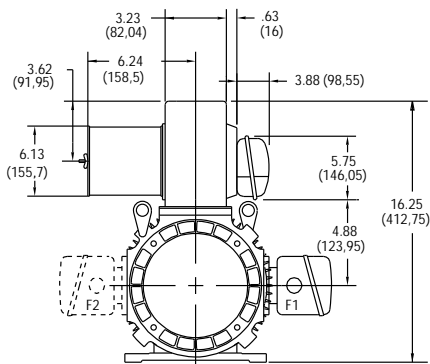
CALLOUT FOR "C" DIMENSION

MODEL	MOTOR ONLY	WITH ENCODER	WITH BRAKE	WITH BRAKE & ENCODER
E182	<u>16.63</u> (422,4)	<u>19.42</u> (493,3)	<u>20.52</u> (521,2)	<u>22.48</u> (571)
E183	<u>20.44</u> (519,2)	<u>22.23</u> (590)	<u>24.33</u> (618)	<u>26.29</u> (667,8)
E184	<u>20.44</u> (519,2)	<u>23.23</u> (590)	<u>24.33</u> (618)	<u>26.29</u> (667,8)

MODEL	2F DIMENSION
E182	<u>4.50</u> (114,3)
E183	<u>5.50</u> (139,7)
E184	<u>5.50</u> (139,7)

Dimensions in () are mm, all others in inches

OPPOSITE DRIVE END



NOTE:

- Reference page 124 for conduit box dimensions.
- Conduit box can be rotated in 90° steps on its own axis and can be mounted on opposite side or top when specified.
- Blower can be rotated 180° about its axis. Size #2 blower is used on E180 frames. See Page 133.

* See terminations, page 126.

A

MOTORS

B

DRIVES

C

PRE-ENGINEERED
DRIVE SYSTEMS

D

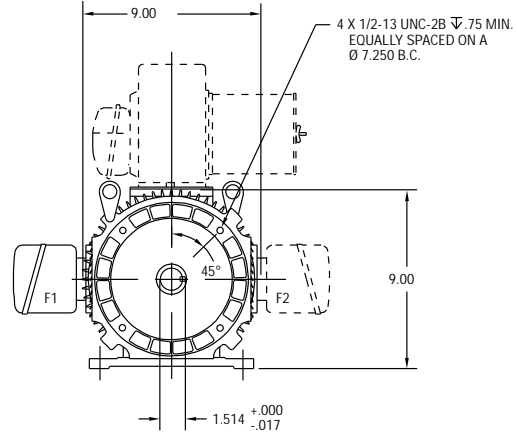
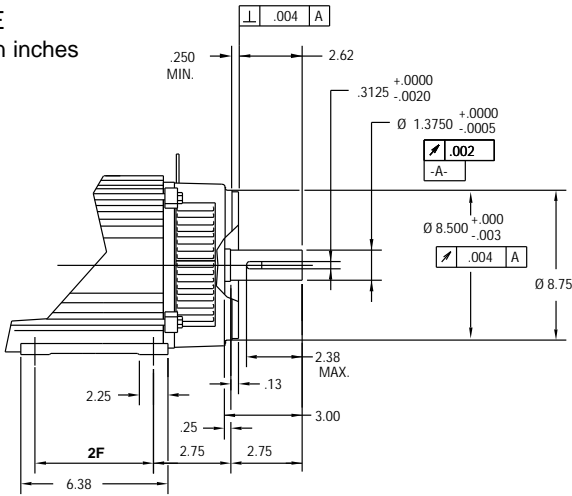
GENERAL
INFORMATION

PACTORQ MOTOR DIMENSIONS

E180 Frame Mounting, NEMA and Metric

NEMA C FACE

Dimensions in inches

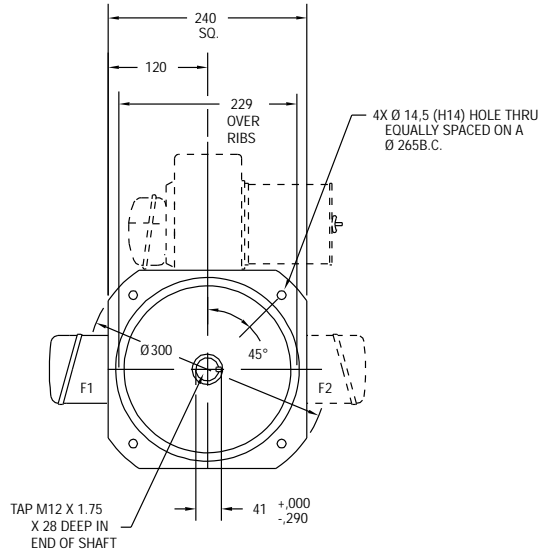
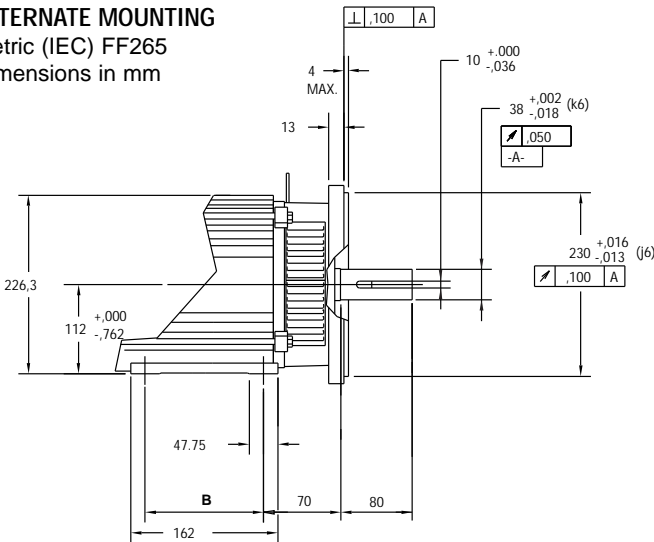


REFER TO DPBV DIMENSIONS ON PAGE 61 FOR FRONT VIEW FEET DIMENSIONS.

MODEL	2F DIMENSION
E182	4.50
E183	5.50
E184	5.50

ALTERNATE MOUNTING

Metric (IEC) FF265
Dimensions in mm



EXCEPT FOR FOOT HEIGHT REFER TO DPBV DIMENSIONS ON PAGE 61 FOR FRONT VIEW FEET DIMENSIONS.

MODEL	B DIMENSION
E182	114,3
E183	139,7
E184	139,7

FACTORQ MOTOR DIMENSIONS

A

MOTORS

B

DRIVES

C

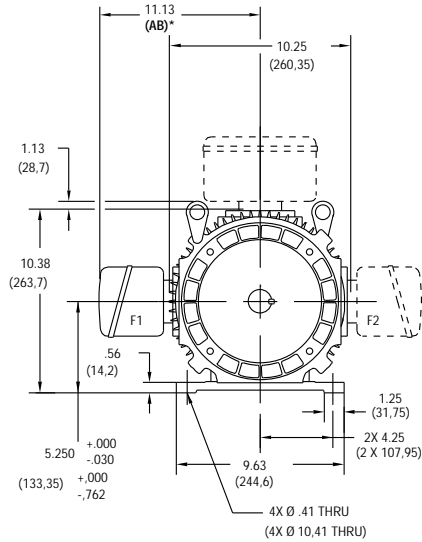
PRE-ENGINEERED
DRIVE SYSTEMS

D

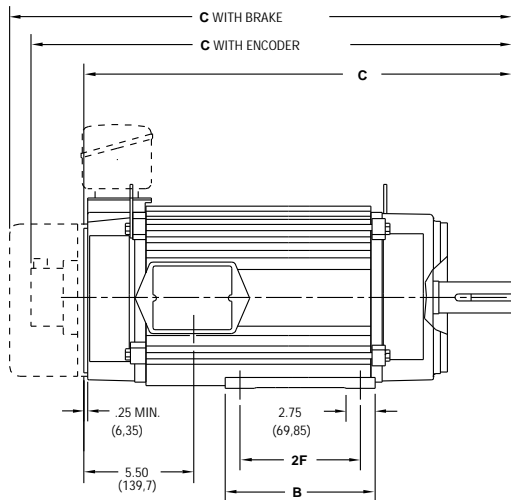
GENERAL
INFORMATION

E210 Frames, TENV (Totally Enclosed, Non-Ventilated)

DRIVE END



SIDE VIEW

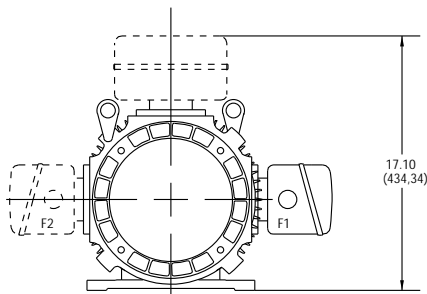


CALLOUT FOR "C" DIMENSION				
MODEL	MOTOR ONLY	WITH ENCODER	WITH BRAKE	WITH BRAKE & ENCODER
E213	<u>22.25</u> (565,15)	<u>25.04</u> (636)	<u>26.14</u> (664)	<u>28.10</u> (713,7)
E215	<u>26.88</u> (682,75)	<u>29.67</u> (753,6)	<u>30.77</u> (781,6)	<u>32.73</u> (831,3)
E218	<u>29.25</u> (742,95)	<u>32.04</u> (813,8)	<u>33.14</u> (841,8)	<u>35.10</u> (891,5)

MODEL	2F DIMENSION	B DIMENSION
E213	<u>5.50</u> (139,7)	<u>8.38</u> (212,85)
E215	<u>7.00</u> (177,8)	<u>8.38</u> (212,85)
E218	<u>10.00</u> (254)	<u>11.38</u> (289,1)

Dimensions in () are mm, all others in inches

OPPOSITE DRIVE END



NOTE:

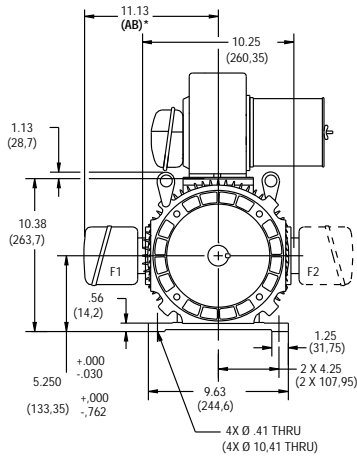
- Reference page 124 for conduit box dimensions.
- Conduit box can be rotated in 90° steps on its own axis and can be mounted on opposite side or top when specified.

* See terminations, page 126.

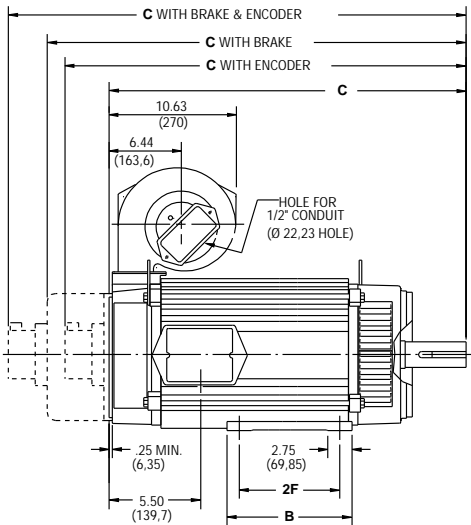
FACTORQ MOTOR DIMENSIONS

E210 Frames, DPBV (Dripproof, Blower Ventilated)

DRIVE END



SIDE VIEW

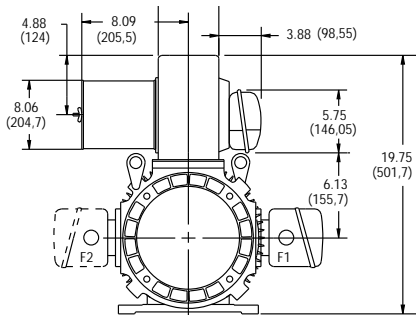


CALLOUT FOR "C" DIMENSION				
MODEL	MOTOR ONLY	WITH ENCODER	WITH BRAKE	WITH BRAKE & ENCODER
E213	22.25 (565,15)	25.04 (636)	26.14 (664)	28.10 (713,7)
E215	26.88 (682,75)	29.67 (753,6)	30.77 (781,6)	32.73 (831,3)
E218	29.25 (742,95)	32.04 (813,8)	33.14 (841,8)	35.10 (891,5)

MODEL	2F DIMENSION	B DIMENSION
E213	5.50 (139,7)	8.38 (212,85)
E215	7.00 (177,8)	8.38 (212,85)
E218	10.00 (254)	11.38 (289,1)

Dimensions in () are mm, all others in inches

OPPOSITE DRIVE END



NOTE:

- Reference page 124 for conduit box dimensions.
- Conduit box can be rotated in 90° steps on its own axis and can be mounted on opposite side or top when specified.
- Blower can be rotated 180° about its axis. Size #3 blower is used on E210 frames. See Page 133.

* See terminations, page 126.

FACTORQ MOTOR DIMENSIONS

A

MOTORS

B

DRIVES

C

PRE-ENGINEERED
DRIVE SYSTEMS

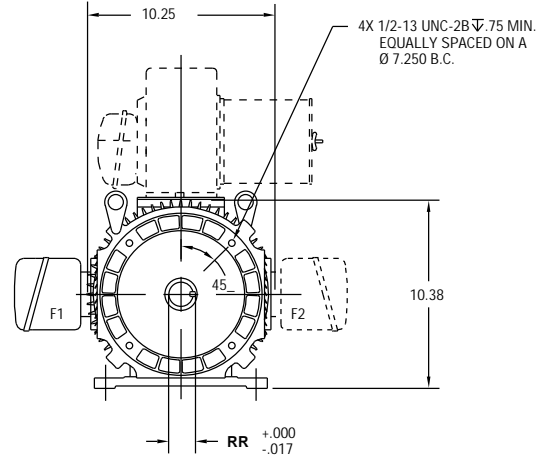
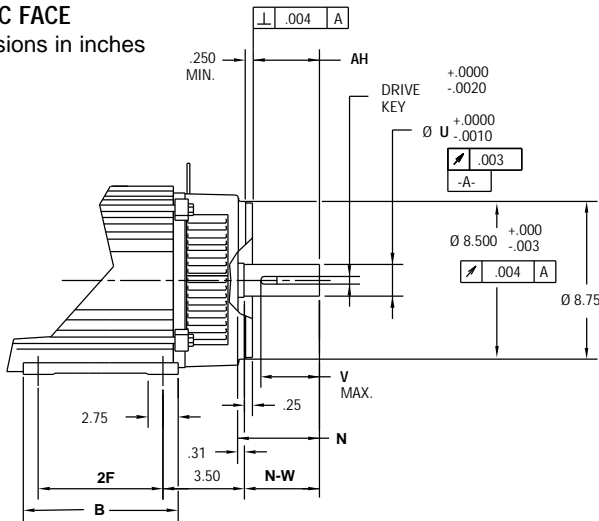
D

GENERAL
INFORMATION

E210 Frame Mounting, NEMA and Metric

NEMA C FACE

Dimensions in inches

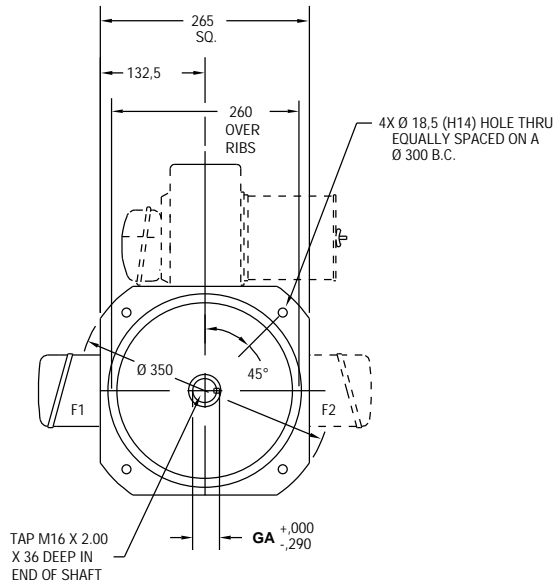
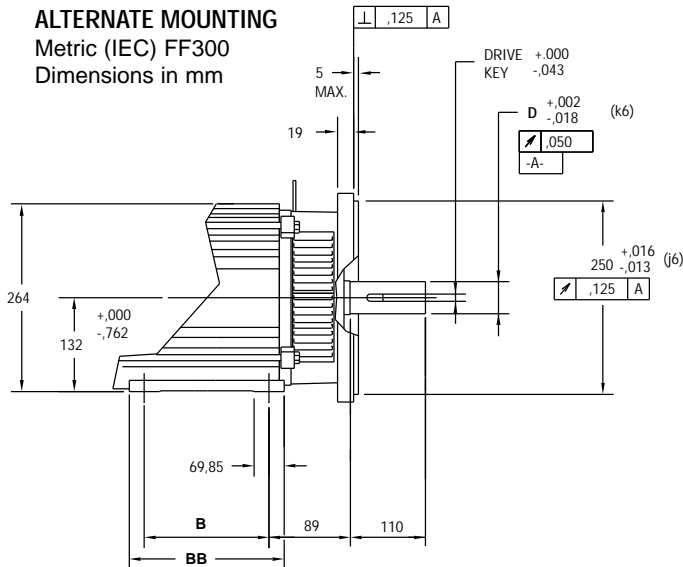


REFER TO DPBV DIMENSIONS ON PAGE 64 FOR FRONT VIEW FEET DIMENSIONS.

MODEL	2F	B	AH	N	N-W	U	V	RR	Drive Key
E213	5.50	8.38	3.75	4.31	4.00	1.625	3.5	1.791	.375
E215	7.00	8.38	5.00	5.56	5.25	2.125	4.75	2.345	.500
E218	10.00	11.38	5.00	5.56	5.25	2.125	4.75	2.345	.500

ALTERNATE MOUNTING

Metric (IEC) FF300
Dimensions in mm



TAP M16 X 2.00 X 36 DEEP IN END OF SHAFT

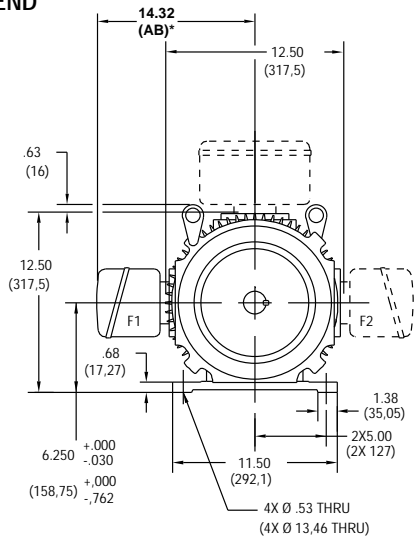
EXCEPT FOR FOOT HEIGHT REFER TO DPBV DIMENSIONS ON PAGE 64 FOR FRONT VIEW FEET DIMENSIONS.

MODEL	D	B	BB	GA	Drive Key
E213	42	139,7	213	45	12
E215	48	177,8	213	51,5	14
E218	48	254	289	51,5	14

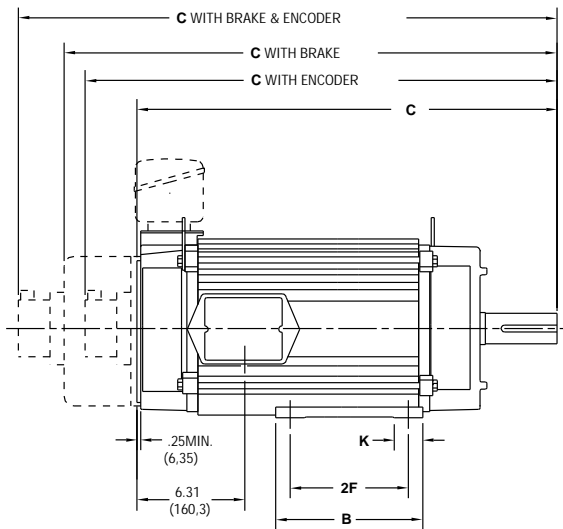
FACTORQ MOTOR DIMENSIONS

E250 Frames, TENV (Totally Enclosed, Non-Ventilated)

DRIVE END



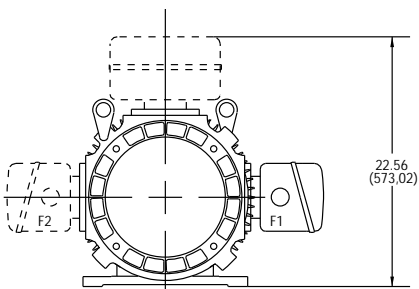
SIDE VIEW



CALLOUT FOR "C" DIMENSION				
MODEL	MOTOR ONLY	WITH ENCODER	WITH BRAKE	WITH BRAKE & ENCODER
F254	26.94 (684,28)	29.73 (755,1)	31.88 (809,8)	33.85 (859,8)
F256	31.44 (798,58)	34.23 (869,4)	36.38 (924,1)	38.35 (974,1)
E258	33.81 (858,77)	36.60 (929,6)	38.76 (984,5)	40.72 (1034,3)
F259	36.81 (934,97)	39.60 (1005,8)	41.76 (1060,7)	43.72 (1110,5)

MODEL	2F DIMENSION	B	K
E254	8.25 (209,55)	12.00 (304,8)	3.38 (85,85)
E256	10.00 (254)	12.00 (304,8)	3.38 (85,85)
E258	14.00 (355,6)	16.00 (406,4)	2.00 (50,8)
E259	14.00 (355,6)	16.00 (406,4)	2.00 (50,8)

OPPOSITE DRIVE END



Dimensions in () are mm, all others in inches

NOTE:

- Reference page 124 for conduit box dimensions.
- Conduit box can be rotated in 90° steps on its own axis and can be mounted on opposite side or top when specified.

* See terminations, page 126.

FACTORQ MOTOR DIMENSIONS

A

MOTORS

B

DRIVES

C

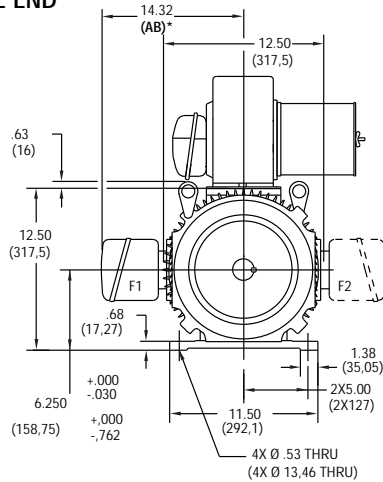
PRE-ENGINEERED
DRIVE SYSTEMS

D

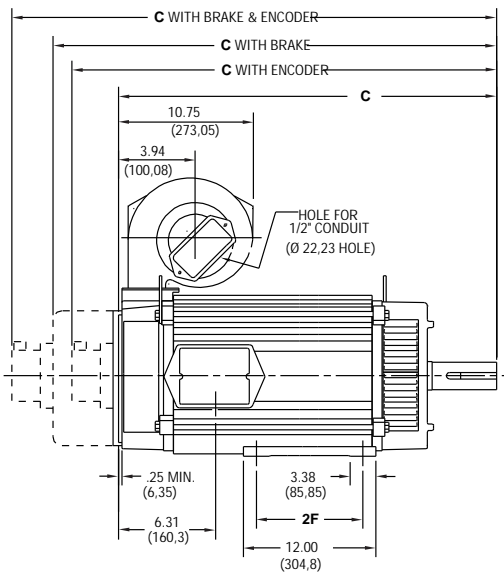
GENERAL
INFORMATION

E254 & E256 Frames, DPBV (Dripproof, Blower Ventilated)

DRIVE END



SIDE VIEW



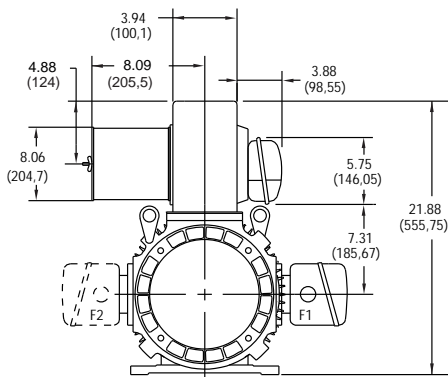
CALLOUT FOR "C" DIMENSION

MODEL	MOTOR ONLY	WITH ENCODER	WITH BRAKE	WITH BRAKE & ENCODER
E254	26.94 (684,28)	29.73 (755,1)	31.88 (809,8)	33.85 (859,8)
E256	31.44 (798,58)	34.23 (869,4)	36.38 (924,1)	38.35 (974,1)

MODEL	2F DIMENSION
E254	8.25 (209,56)
E256	10.00 (254)

Dimensions in () are mm, all others in inches

OPPOSITE DRIVE END



NOTE:

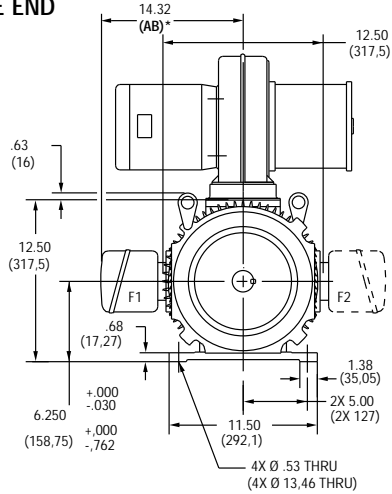
- Reference page 124 for conduit box dimensions.
- Conduit box can be rotated in 90° steps on its own axis and can be mounted on opposite side or top when specified.
- Blower can be rotated 180° about its axis. Size #3 blower is used on E254 & E256 frames. See Page 133.

* See terminations, page 126.

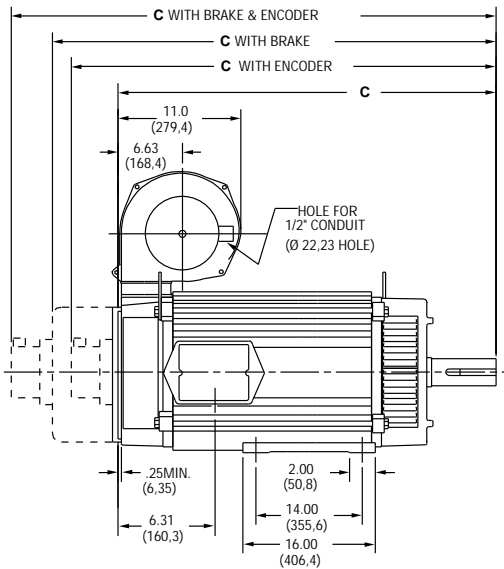
FACTORQ MOTOR DIMENSIONS

E258 & E259 Frames, DPBV (Dripproof, Blower Ventilated)

DRIVE END



SIDE VIEW

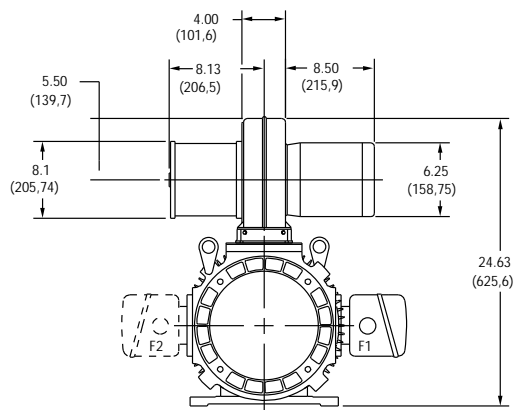


CALLOUT FOR "C" DIMENSION

MODEL	MOTOR ONLY	WITH ENCODER	WITH BRAKE	WITH BRAKE & ENCODER
E258	33.81 (858,77)	36.60 (929,6)	38.76 (984,5)	40.72 (1034,3)
E259	36.81 (934,97)	39.60 (1005,8)	41.76 (1060,7)	43.72 (1110,5)

Dimensions in () are mm, all others in inches

OPPOSITE DRIVE END



NOTE:

- Reference page 124 for conduit box dimensions.
- Conduit box can be rotated in 90° steps on its own axis and can be mounted on opposite side or top when specified.
- Blower can be rotated 180° about its axis. Size #8 blower is used on E259 frames. See Frames 133.

* See terminations, page 126.

FACTORQ MOTOR DIMENSIONS

A

MOTORS

B

DRIVES

C

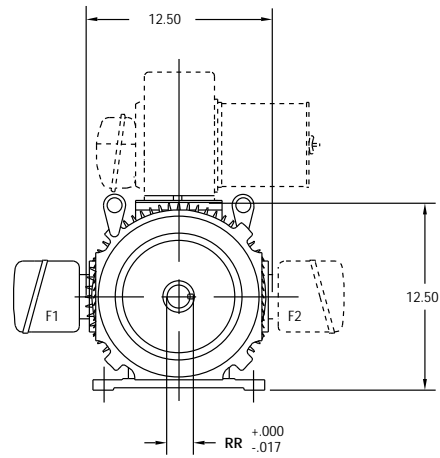
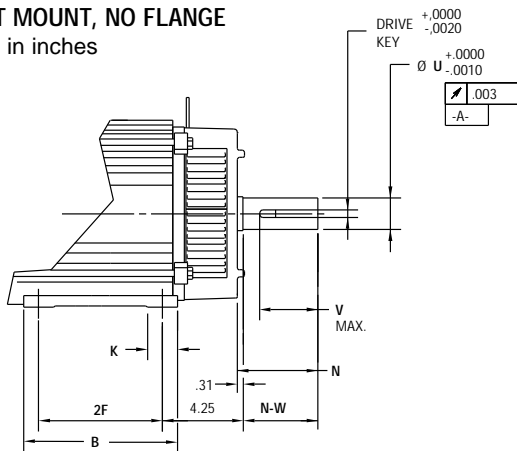
PRE-ENGINEERED
DRIVE SYSTEMS

D

GENERAL
INFORMATION

E250 Frame Mounting, NEMA and Metric

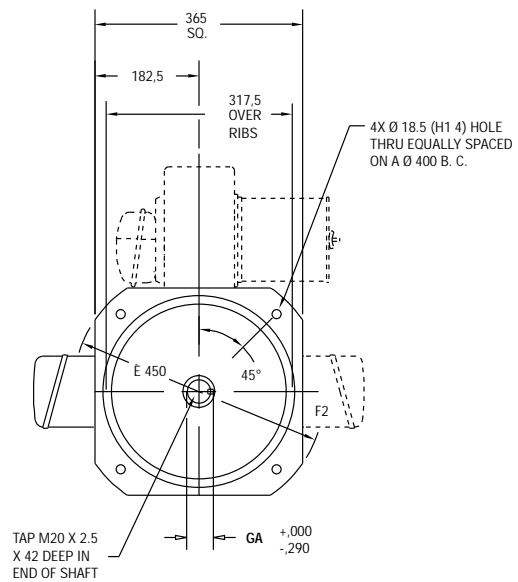
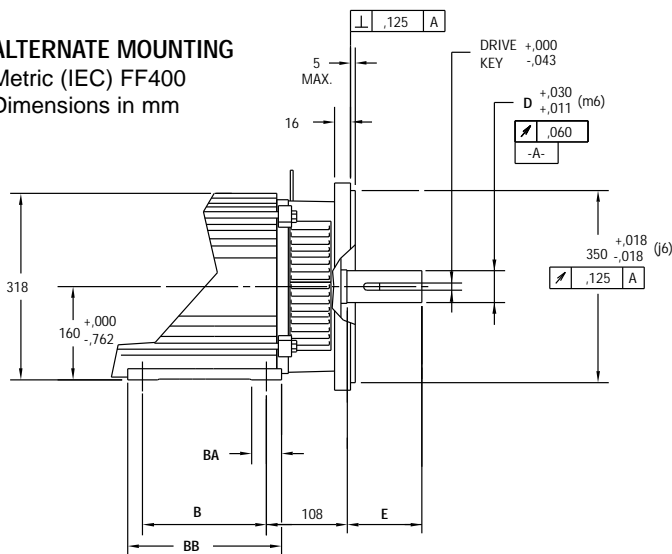
NEMA FOOT MOUNT, NO FLANGE
Dimensions in inches



REFER TO DPBV DIMENSIONS ON PAGE 68 FOR FRONT VIEW FEET DIMENSIONS.

MODEL	2F	B	K	N	N-W	U	V	RR	Drive Key
E254	8.25	12.00	3.38	5.56	5.25	2.125	4.75	2.345	.500
E256	10.00	12.00	3.38	6.18	5.87	2.375	5.37	2.646	.625
E258	14.00	16.00	2.00	6.18	5.87	2.375	5.37	2.646	.625
E259	14.00	16.00	2.00	6.18	5.87	2.375	5.37	2.646	.625

ALTERNATE MOUNTING
Metric (IEC) FF400
Dimensions in mm



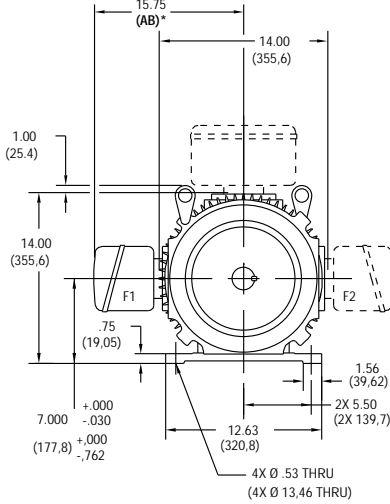
EXCEPT FOR FOOT HEIGHT REFER TO DPBV DIMENSIONS ON PAGE 68 FOR FRONT VIEW FEET DIMENSIONS.

MODEL	D	E	BA	B	BB	GA	Drive Key
E254	55	110	86	209,5	305	59	16
E256	55	110	86	254	305	59	16
E258	60	140	51	355,6	406	64	18
E259	60	140	51	355,6	406	64	18

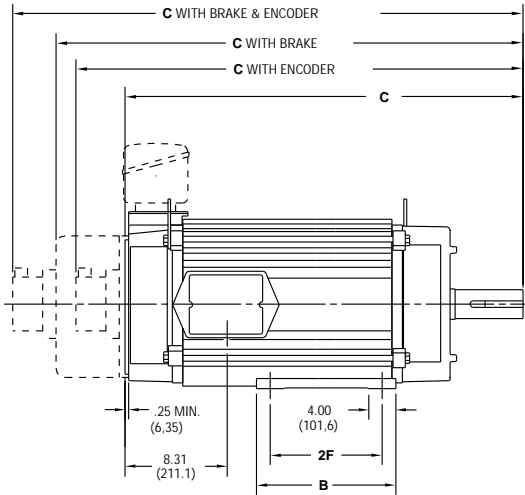
FACTORQ MOTOR DIMENSIONS

E280 Frames, TENV (Totally Enclosed, Non-Ventilated)

DRIVE END



SIDE VIEW

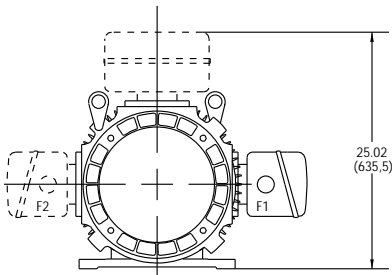


CALLOUT FOR "C" DIMENSION				
MODEL	MOTOR ONLY	WITH ENCODER	WITH BRAKE	WITH BRAKE & ENCODER
E28A	42.00 (1066,8)	44.79 (1137,7)	48.57 (1233,7)	50.54 (1283,7)
E28C	46.12 (1171,4)	48.91 (1242,3)	52.69 (1338,3)	54.66 (1388,4)

MODEL	2F DIMENSION	B DIMENSION
E28A	18.00 (457,2)	20.00 (508)
E28C	22.00 (558,8)	24.00 (609,6)

Dimensions in () are mm, all others in inches

OPPOSITE DRIVE END



NOTE:

1. Reference page 124 for conduit box dimensions.
2. Conduit box can be rotated in 90° steps on its own axis and can be mounted on opposite side or top when specified.

* See terminations, page 126.

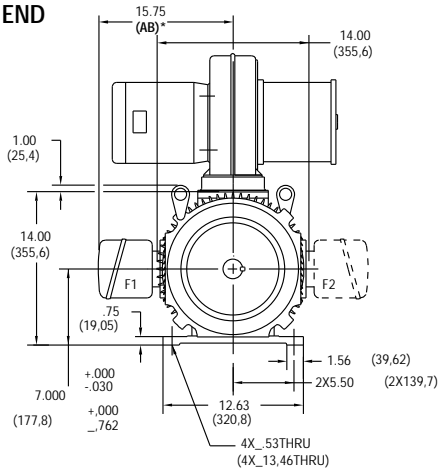
PACTORQ MOTOR DIMENSIONS

A

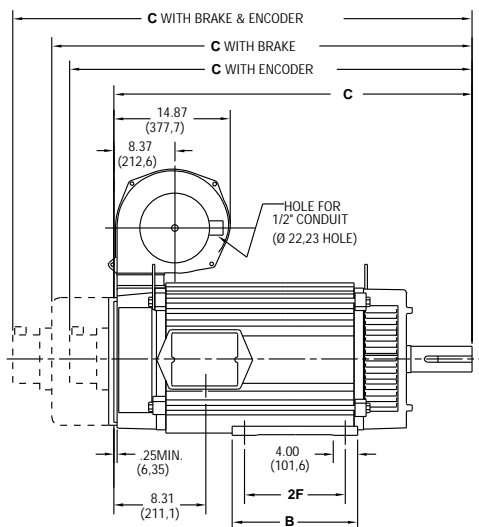
MOTORS

E280 Frames, DPBV (Dripproof, Blower Ventilated)

DRIVE END



SIDE VIEW

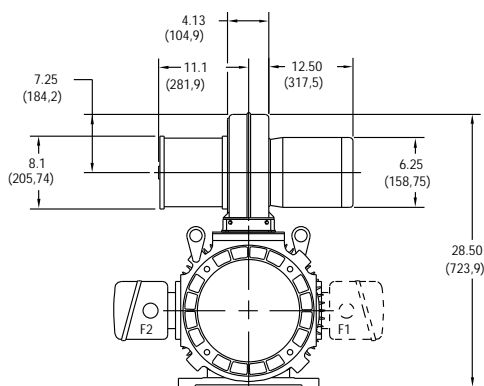


CALLOUT FOR "C" DIMENSION				
MODEL	MOTOR ONLY	WITH ENCODER	WITH BRAKE	WITH BRAKE & ENCODER
E28A	42.00 (1066,8)	44.79 (1137,7)	48.57 (1233,7)	50.54 (1283,7)
E28C	46.12 (1171,4)	48.91 (1242,3)	52.69 (1338,3)	54.66 (1388,4)

MODEL	2F DIMENSION	B DIMENSION
E28A	18.00 (457,2)	20.00 (508)
E28C	22.00 (558,8)	24.00 (609,6)

Dimensions in () are mm, all others in inches

OPPOSITE DRIVE END



NOTE:

- Reference page 124 for conduit box dimensions.
- Conduit box can be rotated in 90° steps on its own axis and can be mounted on opposite side or top when specified.
- Blower can be rotated 180° about its axis. Size #9 blower is used on E280 frames. See Page 133.

* See terminations, page 126.

B

DRIVES

C

PRE-ENGINEERED
DRIVE SYSTEMS

D

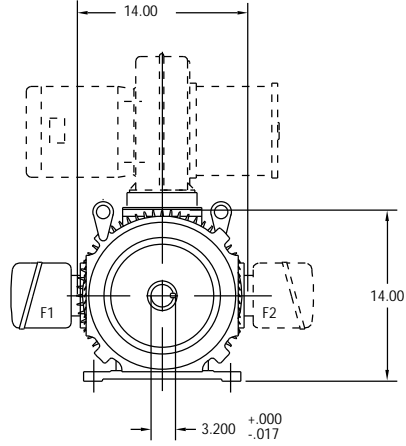
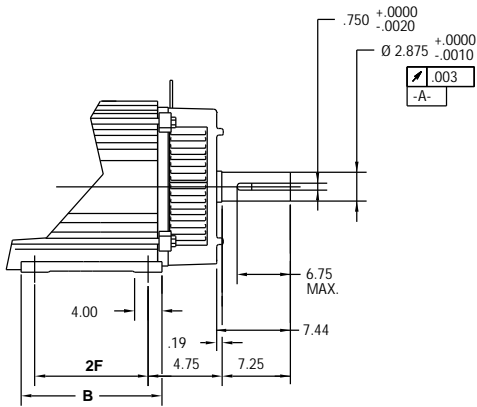
GENERAL
INFORMATION

PACTORQ MOTOR DIMENSIONS

E280 Frame Mounting, NEMA and Metric

NEMA FOOT MOUNT, NO FLANGE

Dimensions in inches

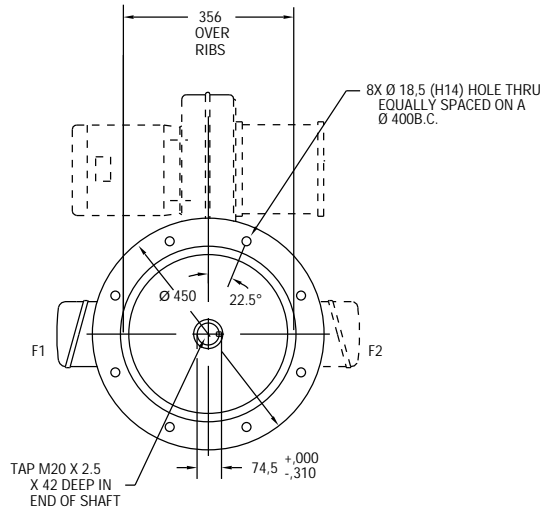
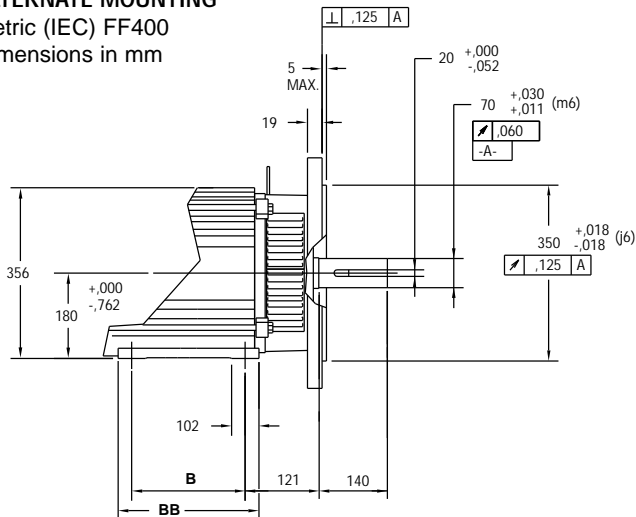


REFER TO DPBV DIMENSIONS ON PAGE 71 FOR FRONT VIEW FEET DIMENSIONS

MODEL	2F DIMENSION	B DIMENSION
E28A	18.00	20.00
E28C	22.00	24.00

ALTERNATE MOUNTING

Metric (IEC) FF400
Dimensions in mm



EXCEPT FOR FOOT HEIGHT REFER TO DPBV DIMENSIONS ON PAGE 71 FOR FRONT VIEW FEET DIMENSIONS

MODEL	B DIMENSION	BB DIMENSION
E28A	457,2	508,0
E28C	558,8	610,0

FACTORQ MOTOR DIMENSIONS

A

MOTORS

B

DRIVES

C

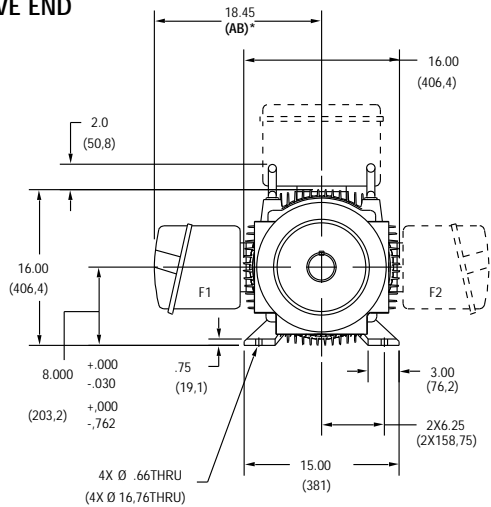
PRE-ENGINEERED
DRIVE SYSTEMS

D

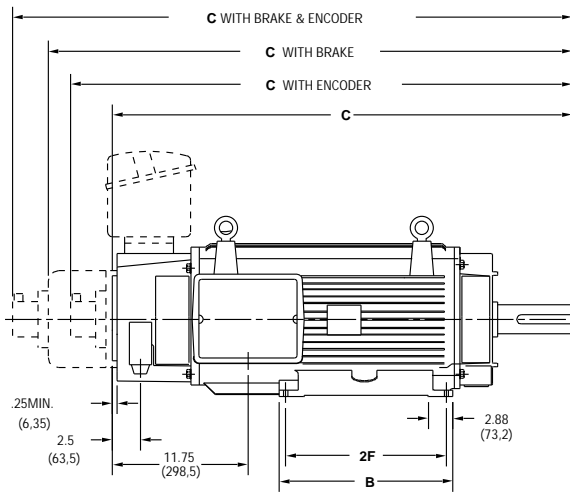
GENERAL
INFORMATION

E320 Frames, TENV (Totally Enclosed, Non-Ventilated)

DRIVE END



SIDE VIEW

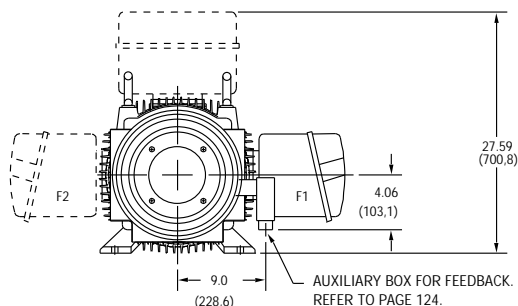


CALLOUT FOR "C" DIMENSION				
MODEL	MOTOR ONLY	WITH ENCODER	WITH BRAKE	WITH BRAKE & ENCODER
E328	44.33 (1126)	47.12 (1196,8)	52.09 (1323,1)	54.06 (1373,1)
E32B	51.08 (1297,4)	53.87 (1368,3)	58.54 (1494,5)	60.81 (1544,6)
E32D	57.83 (1468,9)	60.62 (1539,7)	65.59 (1666)	67.56 (1716)

MODEL	2F DIMENSION	B DIMENSION
E328	16.00 (406,4)	17.88 (454,2)
E32B	22.00 (558,8)	23.88 (607)
E32D	28.00 (711,2)	29.88 (759)

Dimensions in () are mm, all others in inches

OPPOSITE DRIVE END



NOTE:

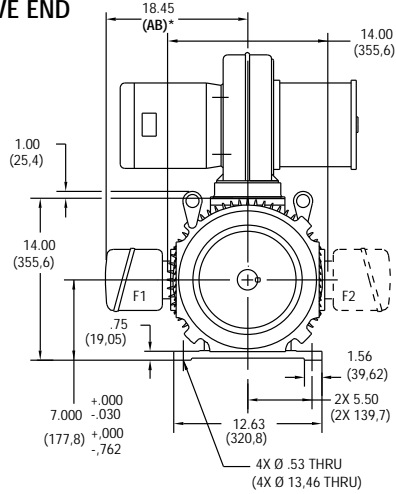
1. Reference page 124 for conduit box dimensions.
2. Conduit box can be rotated in 90° steps on its own axis and can be mounted on opposite side or top when specified.

* See terminations, page 126.

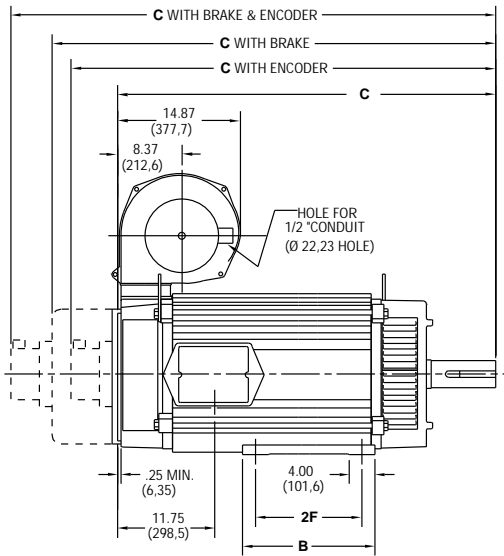
FACTORQ MOTOR DIMENSIONS

E320 Frames, DPBV (Dripproof, Blower Ventilated)

DRIVE END



SIDE VIEW

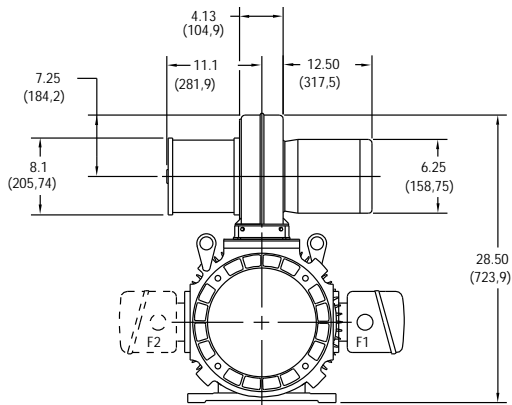


CALLOUT FOR "C" DIMENSION				
MODEL	MOTOR ONLY	WITH ENCODER	WITH BRAKE	WITH BRAKE & ENCODER
E328	44.33 (1126)	47.12 (1196,8)	52.09 (1323,1)	54.06 (1373,1)
E32B	51.08 (1297,4)	53.87 (1368,3)	58.54 (1494,5)	60.81 (1544,6)
E32D	57.83 (1468,9)	60.62 (1539,7)	65.59 (1666)	67.56 (1716)

MODEL	2F DIMENSION	B DIMENSION
E328	16.00 (406,4)	17.88 (454,2)
E32B	22.00 (558,8)	23.88 (607)
E32D	28.00 (711,2)	29.88 (759)

Dimensions in () are mm, all others in inches

OPPOSITE DRIVE END



NOTE:

- Reference page 124 for conduit box dimensions.
- Conduit box can be rotated in 90° steps on its own axis and can be mounted on opposite side or top when specified.
- Blower can be rotated 180° about its axis. Size #10 blower is used on E320 frames. See page 133.

* See terminations, page 126.

FACTORQ MOTOR DIMENSIONS

A

MOTORS

B

DRIVES

C

PRE-ENGINEERED
DRIVE SYSTEMS

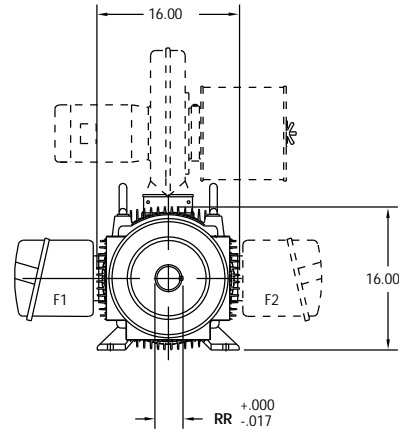
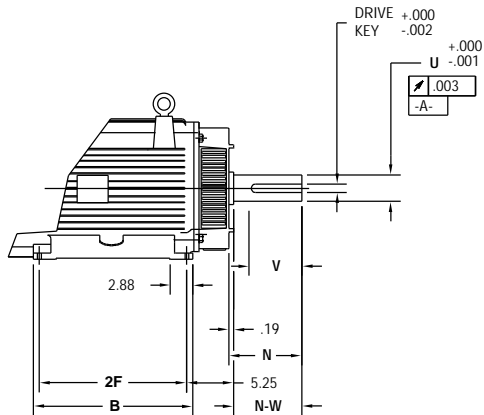
D

GENERAL
INFORMATION

E320 Frame Mounting, NEMA and Metric

NEMA FOOT MOUNT, NO FLANGE

Dimensions in inches



REFER TO DPBV DIMENSIONS ON PAGE 74 FOR FRONT VIEW FEET DIMENSIONS

MODEL	2F	B	N	N-W	U	V	RR	Drive Key
E328	16.00	17.88	5.94	5.75	2.875	5.25	3.200	.750
E32B	22.00	23.88	6.69	6.50	3.250	6.00	3.581	.750
E32D	28.00	29.88	7.44	7.25	3.625	6.75	4.009	.875

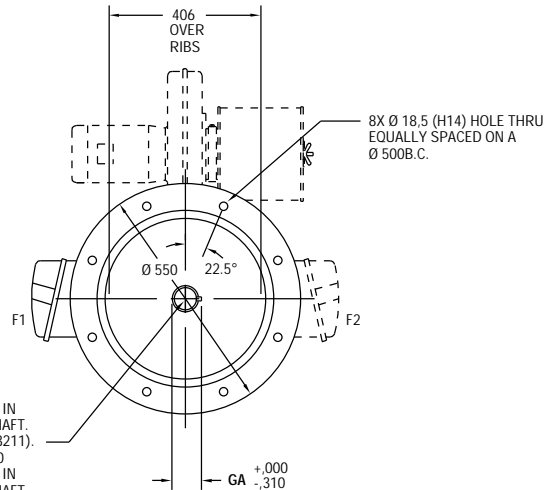
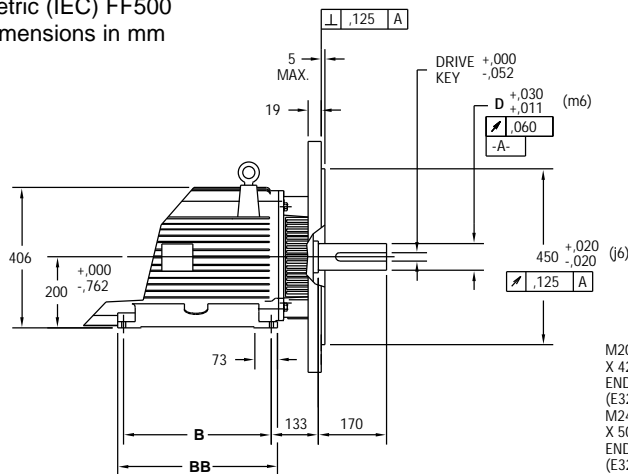
SHAFT DIMENSIONS FOR BELT DUTY

MODEL	N	N-W	U	V	RR	Drive Key
E328	6.69	6.50	3.250	6.00	3.581	.750
E32B	7.44	7.25	3.625	6.75	4.009	.875
E32D	8.44	8.25	4.125	7.75	4.563	1.000

ALTERNATE MOUNTING

Metric (IEC) FF500

Dimensions in mm



M20 X 2.5 X 42 DEEP IN END OF SHAFT. (E328 & E3211).
M24 X 3.00 X 50 DEEP IN END OF SHAFT. (E3213).

EXCEPT FOR FOOT HEIGHT REFER TO DPBV DIMENSIONS ON PAGE 74 FOR FRONT VIEW FEET DIMENSIONS

MODEL	D	B	BB	GA	Drive Key
E328	80	406,4	454	85	22
E32B	80	558,8	607	85	22
E32D	90	711,2	759	95	25

